



**New Mexico State University
Department of Music**

Handbook

2024-25

TABLE OF CONTENTS

MUSIC DEPARTMENT (Overview)	page 3
Faculty / Staff	
Accreditation	
Facilities / Resources	
ADMISSION INTO THE PROGRAM	page 4
SCHOLARSHIPS AND GRANTS	page 4
MUSIC DEGREES	page 5
BA CAPSTONE/PROGRAM OF STUDY	page 6
ADVISING	page 6
INSTRUMENT RENTAL	page 6
APPLIED MUSIC	page 6
Fees	
Credit	
Enrollment	
Lessons / Studio Class	
Juries	
Grading	
PROGRAM NOTES REQUIREMENTS	page 7
RECITAL REQUIREMENTS	page 9
Fee	
Recital Hearings	
Recital Timeline	
Posters/Flyers	
PROFICIENCIES	page 12
Piano Proficiency	
Studio Proficiencies	
TEACHER EDUCATION PROGRAM	page 16
MUSIC ENSEMBLES	page 16
CONCERT / RECITAL ATTENDANCE	page 17
FACILITIES USAGE	page 17
General	
Lobby	
Postings	
Recital Hall, Rehearsal Halls, Classrooms	
Practice Rooms	
Copier/Fax Machine	
ACADEMIC INTEGRITY	page 18
Plagiarism	
Academic Honesty	
Copyright Policy	
HEALTH AND SAFETY	page 19
STUDENT COMPLAINT POLICY	page 21
GRADUATE DEGREE INFORMATION	page 22
GRADUATE DEGREE PLANS	page 26
UNDERGRADUATE DEGREE PLANS	page 27
COURSE ROTATION	page 37
FACULTY / STAFF DIRECTORY	page 38
MUSIC CENTER FLOOR PLANS	page 39

THE MUSIC DEPARTMENT (Overview)

The New Mexico State University Department of Music was founded January 21, 1890 with the charge to make music a part of the lives of the students and the community. That charge has always been the underlying theme of the department. In addition, the department recognizes the historical significance of the special missions of land-grant institutions to provide a liberal and practical education for students and to sustain programs of research/creative activity and public service.

As a member department in the College of Arts and Sciences, this department offers undergraduate professional degrees in Music Education and Music Performance; liberal arts degrees in general Music, along with specialized tracks in Theater, pre-Music Therapy, and pre-Speech Language Pathology; as well as graduate degrees in Music Education, Music Performance and Conducting. Located on the corner of University Avenue and Espina Street, the Music Center overlooks the broad, green, and open expanse of the University Horseshoe. New Mexico State University has been a fully accredited member of the National Association of Schools of Music since 1968.

Mission Statement:

- To prepare students for professional careers and/or the pursuit of advanced degrees in music and music-related fields
- To empower our students to be life-long learners by providing a foundational education in music supported by our strong commitment to teaching, performance, research and service
- To provide impactful opportunities for our student body to perform, study, create and experience music
- To serve as an artistic destination for our community

Vision Statement: We seek to elevate the role of music as essential to society, both as an expressive art form and an integral component of a universal education.

We will continue to:

- Enhance our public presence in the region as a destination for all students and for the community as a place of artistic and musical excellence
- Lead in the development of adaptive and relevant programs and curricula based on the needs of an ever-changing society
- Raise our profile through outstanding instruction, student success and retention, faculty scholarship and performance, and the engagement of our ensembles with the community, statewide and regionally, and with all students, regardless of major
- Foster a learning environment that recognizes the changing needs of our community

The Department of Music values:

Access – we believe everyone in our community, regardless of background or experience, should have the opportunity to experience music in their lives

Elevation – we believe that by offering superior musical opportunities we can improve the quality of life for students and our community

Inclusion – we believe that individual expression and identity should be reflected in our musical experiences and is vital for both personal and institutional success

Faculty/Staff

There are 18 full-time faculty members, additional adjunct faculty members, and 3 full-time staff members. Among the faculty are many outstanding performers, scholars, and educators, representing a broad diversification of background and talent. (see p. 34)

Accreditation

The Department is accredited by the National Association of Schools of Music. Students in the Music Education program are also under the supervision of the NMSU College of Education and must meet requirements established by the Council for the Accreditation of Educator Preparation and the New Mexico State Board of Education.

Facilities/Resources

The music department is housed in one building that consists of two rehearsal halls, one auditorium that seats 504, two dressing rooms, a conference room, three classrooms that seat 30-35, three program area offices, and 21 faculty offices.

University Library resources are housed in Branson Hall and the Zuhl Library. The extensive music holdings include: bound volumes of scores and collected editions, books, periodicals, microfilm and microfiche. In addition, the Department of Music has libraries of band, orchestra, jazz, choral, and chamber ensemble music.

The NMSU Library has a subscription to the NAXOS online music listening service that students and faculty can access from any computer with an internet connection (<https://nmsu.libguides.com/music>). Students also have access to music notation and sequencing software, as well as a standard internet connection in the Department's 15-station computer lab. There are 28 practice rooms, a 16-unit electronic piano lab, and a full complement of band and orchestral instruments available. The department also has a Schiedmayer celeste, a Bösendorfer concert grand piano, 2 Steinway concert grand pianos, 43 practice pianos, and a William Dowd harpsichord.

ADMISSION INTO THE UNDERGRADUATE PROGRAM

For a student to be officially accepted as a Music major or minor, they must do the following:

- perform an audition for a panel of no less than three Music faculty members
 - one of whom must be the director of their program area (band, choir, orchestra, keyboard)
 - one of whom must be an applied teacher of the student's principal performance area
 - These auditions must be completed before August 1 for a student to be accepted as a Music major.

Any student declaring Music as their major may be accepted for a one-semester probationary period. During that first semester, the Music faculty will determine if the student has the necessary skills and work ethic to continue as a major. The student's course work, ensemble participation, and applied jury will be the basis for the decision to allow the student to continue or not.

SCHOLARSHIPS AND GRANTS

The most up to date information on scholarships can be obtained from the Coordinator of Scholar Dollars in the office of the Dean of Arts and Sciences in Breland Hall.

In order to have all paperwork processed before the beginning of the Fall semester, students are

encouraged to have all scholarship and financial aid application materials into the Office of Financial Aid by March 1.

Scholarships and grants for music majors are administered through the performance areas. To be eligible for a music major scholarship or grant, students must first be admitted into the program. Program admission requirements include an audition for a panel of no less than three Music faculty members. One must be the major ensemble director of their program area (band, choir, opera, orchestra, keyboard). One must be the applied teacher of the student's principal instrument and the other must can be any member of the music faculty from any area. Specific audition information and requirements for each performance area can be found at <https://music.nmsu.edu/admissions/auditions.html>

In order to have all paperwork processed before the beginning of the Fall semester, students are encouraged to have all scholarship and financial aid application materials to the Office of Financial Aid by March 1.

The most up to date information on scholarships can be obtained from the Coordinator of Scholar Dollar\$ in the office of the Dean of Arts and Sciences in Breland Hall.

Service awards for non-majors are available based upon ensemble need and funding availability. For more information regarding these awards or to set up an audition, please contact one of the following:

- **Winds and Percussion:** Trista Pior, (575) 646-2304 (Monday/Wednesday/Friday)
- **Vocal:** Trista Pior, (575) 646-2067 (Tuesday/Thursday)
- **Strings:** Jorge Martinez-Rios, (575) 646-1647
- **Keyboard:** Dr. Laura Spitzer, (575) 646-2228

Specific audition information and requirements can be obtained through each performance area and online at: <http://music.nmsu.edu/index.php/en/auditions>

MUSIC DEGREES (degree plans on page 22)

Bachelor of Music

- Vocal Performance
- Instrumental Performance
- Piano Performance

Bachelor of Music Education

- K-12 Certification
 - Choral emphasis
 - Instrumental emphasis

Bachelor of Arts in Music

- General
- Theater
- Pre-Music Therapy
- Pre-Speech, Language Pathology

Master of Music (Concentrations in Performance, Conducting, Music Education)

A Minor in Music is also available. (See Undergraduate Catalog)

A student must earn a grade of C- or better in all undergraduate degree requirements for any degree in the Department of Music. If extenuating circumstances exist, the student may appeal in writing to a faculty panel consisting of the Department Head, the student's faculty advisor, and the instructor of the course in question. Graduate Students must make the grade of B or better in a course for it to count toward degree completion.

ADVISING

Each Music major will have a central academic advisor as well as a music department advisor. In most cases, the student's principal applied professor will serve in this capacity. **STUDENTS SHOULD MEET WITH THEIR MUSIC ADVISOR PRIOR TO MEETING WITH THEIR CENTRAL ADVISOR.** Each semester the student will make an appointment with their advisors, prior to registration, to consider the appropriate courses for the following semester. An advising worksheet will be filled out and signed by both the student and the advisor. A copy will be given to the student and another will be placed in the student's academic folder in the Music office.

Any questions specific to Music Education can be directed to the Music Ed Coordinator. Performance degree questions can be addressed by the applied professors. BA Degree questions can be directed to the BA Coordinator.

B.A. DEGREE PROGRAM OF STUDY/CAPSTONE PROJECT

By the end of the Sophomore year, all B.A. Degree students must submit and have approved a Program of Study. Programs of study will be submitted to the B.A. Degree coordinator and will determine a focus for Elective courses and the Capstone Project. The Capstone project will be derived from the program of Study.

INSTRUMENT RENTAL

Students may rent instruments from the Music Department to be used for academic and performance purposes as required by their degree plan and/or ensemble. These fees (\$100 per semester) must be paid before the student receives the instrument. If the student intends to keep the instrument during the break between the Fall and Spring semesters, the rental fee must be paid for the Spring semester before the end of the Fall semester, otherwise the instrument must be turned in by the Monday after Commencement. ALL instruments must be checked in for the summer by the Monday following May Commencement. If a student fails to return an instrument by this date, a charge will be added to their NMSU bill for the full replacement cost of the instrument. Instruments will not be loaned or rented to individuals who are not currently enrolled as Music majors at NMSU. To rent woodwinds, brass, and/or percussion, see Trista Pior in the Band office. To rent string instruments, including guitars, see Rena Crollett in the main Music office.

APPLIED MUSIC

(MUSC 2510/330/430/582)

Note: In general, applied lessons are reserved for music majors and minors. Minors having met their degree requirements and non-music students may enroll for applied lessons only with the permission of the applied instructor and the Music Department Head. No load credit will be given to a faculty member for Applied Music that would be considered elective hours for the student. Exceptions may be approved by the Department Head.

MUSC 1992 is offered for those students who do not meet the minimum proficiency level to enroll in MUSC 2510 or above. On permission of the department head, it may be taken by non-music students and music majors studying a secondary instrument. It may consist of group and/or private instruction.

FEES

In addition to regular tuition, a fee of \$60 per credit hour will be assessed for each credit hour enrolled.

ENROLLMENT

Students wishing to enroll must have verified permission from the applied instructor.

Music Education and Music Performance students must complete two semesters of MUSC 430

LESSONS/STUDIO CLASS

At the very beginning of each semester, the student must contact their applied instructor and schedule a time for the weekly private lesson. The student is expected to attend and come prepared to every lesson. Along with private lessons, the student is expected to attend a weekly studio class scheduled by the instructor.

JURIES

At the end of each semester, all students taking applied lessons will perform a jury for the applied faculty in their area (brass, woodwinds, percussion, strings, keyboard, voice). Students who present a required Junior or Senior recital may be exempt from juries.

Before a student advances to MUSC 430, they must demonstrate improvisation/composition skills appropriate for their voice or instrument. Students will not be allowed to enroll in the final level of applied music without meeting this competency. (Specifics will be outlined in the course syllabus.)

GRADING

Any student receiving a final grade lower than C- for more than two semesters will need to reaudition for admittance to the program. If the audition is unsuccessful, they will need to change their major.

PROGRAM NOTES REQUIREMENT

MUSIC EDUCATION MAJORS: Assignment is required for advancement to 430.

Program Notes assignment

1. Choose 2 or more substantial works or sets that will be or are being considered as part of your proposed senior recital.
2. Submit an annotated bibliography of four scholarly sources for each work, with proper Chicago/Turabian bibliographic citations. Each source should be annotated in your own words, providing at least 3 useful/relevant facts from each source for your program notes. For works written after 1970, 3 citations maximum per work using a variety of reliable resources.
3. Write 300-400 words for each work/set.
4. Carefully proofread your work and turn in your draft to your applied professor *by the last date to withdraw From a Single Course with a "W"* (See official NMSU Academic Calendar). Your applied professor will then provide feedback/comments, for you to finalize and turn in your final assignment at your jury.

This assignment will be assessed by the Jury Panel as pass/fail, with one opportunity to edit/make changes prior to the end of the semester/last day of Finals.

PERFORMANCE MAJORS: Assignment will be required for advancement to 430
AND Ped & Lit I OR II.

The same program notes assignment may also be used for jurying up to 430 (not including the pedagogical essay)

Program Notes assignment

1. Choose 2 or more substantial works or sets that will be or are being considered as part of your proposed junior/senior recital.
2. Submit an annotated bibliography of four scholarly sources for each work, with proper Chicago/Turabian bibliographic citations. Each source should be annotated in your own words, providing at least 3 useful/relevant facts from each source for your program notes. For works written after 1970, 3 citations maximum per work using a variety of reliable resources.
3. Write 300-400 words for each work.
4. Additionally, write a Pedagogical Analysis essay of 500 words for each work/set with score excerpts for each point under discussion (required). In your essay, discuss technical and musical challenges: how would you practice them, and how would you teach them?
5. Carefully proofread your work, and turn in your draft when required* per your course Syllabus, and then finalize and turn in your final assignment at your jury.

*For advancement to 430, your applied professor *by the last date to withdraw From a Single Course with a "W"* (See *official NMSU Academic Calendar*). Your applied professor will then provide feedback/comments, in order for you to finalize and turn in your final assignment at your jury.

*Per your Syllabus Requirements for Ped & Lit.

BA majors: Assignment would fulfill the analysis requirement for the Capstone Portfolio (1-Credit option).

Program Notes assignment

1. Choose 2 or more substantial works or sets that you have studied/are studying in your applied repertoire.
2. Submit an annotated bibliography of four scholarly sources for each work, with proper Chicago/Turabian bibliographic citations. Each source should be annotated in your own words, providing at least 3 useful facts from each source for your program notes. For works written after 1970, 3 citations maximum per work using a variety of reliable resources.
3. Write 300-400 words for each work.
4. Carefully proofread your work, and turn in your draft when required* per your course Syllabus, and then finalize and turn in your final assignment when required.**

NB: The Capstone Portfolio will be created in Canvas with this assignment built in.

- Date of composition or publication
- Relevant biographical information
- The period in which the composer lived
- The historical, cultural or socio-political backdrop
- Important influences or teachers
- Origin story for the piece, if there is one
- The genre/form of the work
- How many works the composer wrote in this genre
- Stylistic traits in the work which are either common to the period or unique to the composer

**See supplementary materials for helpful suggestions, sources, examples and procedures.

Pedagogical Analysis assignment for Ped & Lit:

Suggested additional components:

- Create a teaching video with demonstrations on your instrument
- Create a college-level repertoire list. Consider levels of difficulty as well as instrumentation (SATB, solo vs. accompanied vs. quartet).
- Create a mock Junior or Senior Recital Program

RECITAL REQUIREMENTS

Bachelor of Music in Performance

- Junior recital (30 minutes of music) (MUSC 340 – 1 credit)
- Senior recital (60 minutes of music) (MUSC 440 – 2 credits)

Bachelor of Music Education

- Senior recital (30 minutes of music) (MUSC 440 – 1 credit)

Note: Only repertoire assigned by the student's applied instructor and prepared with the guidance of that instructor will be allowed on the Junior or Senior recital.

Fee

Students will be charged a fee of \$150 when presenting a Junior, Senior, or Graduate Recital. This fee covers the cost of the technical crew for the performance and a 2-hour dress rehearsal in the Recital Hall. The crew will be responsible for:

- setting up the stage area, including the acoustic shells and piano
- striking the stage area following the performance
- setting lights prior to the performance and running them during the performance
- recording the performance (both audio and video)

The student will be provided a flash drive with both an audio and video recording of their performance as part of the fee.

If the student or applied professor request that the recital hall piano be tuned, a fee of \$92 will be added to the regular recital fee.

All recitals, both in Atkinson and off-site, must be scheduled through the Scheduling Coordinator. A student can only request a recital date with written authorization from the applied professor. An email from the professor to the Scheduling Coordinator will be accepted.

All scheduling requests, for performances and dress rehearsals, should be made at least four weeks prior to the performance.

Student recitals may be scheduled in the Atkinson Recital Hall for the following times:

- Monday through Friday
 - 5:30 p.m.
 - 7:30 p.m.
- Saturday and Sunday
 - 2:30 p.m.
 - 5:00 p.m.
 - 7:30 p.m.

These times will be when the performance begins. Additional time before the performance will need to be arranged at the time the reservation is made.

A student scheduling a recital in a venue other than Atkinson Recital Hall is not exempt from paying the fee. A member of the technical crew will be available to set up and record (audio only) the off-site recital and a recording will be provided to the student performer. For a crew member to be available for off-site recordings, a reminder needs to be submitted to the Stage Manager/Technical Director at least two weeks prior to the performance.

No student recitals will be scheduled after the last class day of the regular semester. Student recitals will not be scheduled during the summer sessions unless the student is continuously enrolled for Applied Music and is studying regularly with their instructor until the recital is presented. The Recital Hearing process will apply during the summer sessions just as it does during the regular terms.

No other student performances, including ensemble concerts, will be scheduled after the last class day of the regular semester. The only exceptions are the Honors Recital and performances presented at NMSU Commencement ceremonies.

Posters/Flyers

All posted advertisement materials need to contain the following information:

- New Mexico State University (NMSU) - Do not omit "University" - "NM State" is not acceptable
- Department of Music Logo
- Performing artist's or ensemble's name
- Complete date with the year
- Performance start time and venue

Printed Programs

All printed performance programs must be submitted using the format located under student resources: <https://music.nmsu.edu/resources/helpful-links.html>

It must be submitted to the Music Office a minimum of one week before the event.

It must be submitted in the template format and it must be submitted as a word document.

Programs not following these guidelines will be returned.

Recital Hearings

Each student will present their complete recital before a panel of at least three Music faculty members at least four weeks prior to giving the public recital. If the panel determines the student is not prepared to perform, the student will not be allowed to give the recital. The panel has the option to allow the student one more opportunity to present the hearing, if the first attempt was unsuccessful.

The hearing may also be accomplished by making a high-quality audio/video recording, in the presence of the student's applied teacher, and then distributing the recording to the other panel members. If this option is selected, the recording will need to be produced at least three weeks before the recital date.

If a student passes a Junior Recital hearing and is allowed to present the public performance, that performance may be equivalent to "jurying up" to MUSC 430 if all other criteria are met. (See area Coordinator for more info.)

Below is a suggested timeline in preparation for a student recital. Details and times may vary by studio.

Recital Preparation Timeline

Nine months - One year in advance:

Determine, approximately, when the recital will occur (late fall, mid-spring etc.).

Consider major pieces – Concerto, Sonata etc. Check out potential pieces from the library, read them to determine difficulty and appropriateness, listen to recordings, consult with your studio teacher.

Begin to secure any other assisting musicians (chamber works).

With the assistance of your Applied instructor, select a 3-member recital committee (your major teacher plus 2 other faculty) and ask them to serve. Vocal students should have all the voice faculty serve.

Determine with your teacher if you have met all of the pre-requisites for the recital, including enough credits in MUSC 430.

Six months in advance (the semester before the recital)

Schedule the recital – check with the Music Department Office, your teacher, and your committee; check major ensemble performance schedules, other local performance commitments, etc. to avoid conflicts; pay all necessary fees.

File all necessary forms with Rena Crollett in the Music Office.

Continue to refine/finalize the program with your teacher – consider variety of styles, time periods, difficulty levels, audience appeal, total time, your needs/growth, etc.

Purchase the music as the program is finalized.

Make a list, with contact information, of all participants – accompanist, committee, assisting musicians, page-turner, etc.

Make sure you have enrolled in MUSC 440 (Senior Recital) and MUSC 430.

Three - four months in advance:

Secure an approved accompanist according to your teacher's policies (minimum of 9 weeks prior to the recital - earlier is better)

Schedule the dress rehearsal in the recital hall for a day or two before the recital with Jeff Lee.

Consider all schedules – accompanist, instructor, assisting musicians, etc.

Schedule regular rehearsals – plan to bring your accompanist to lessons often. This is the time period when most of the musical preparation should occur.

Two months in advance:

Schedule the hearing - consider all schedules, reserve the recital hall with Jeff Lee.

Increase rehearsals as necessary.

Record and listen carefully to your rehearsals.

Finish all preliminary research and layout for your program.

Proofread your program and ask your teacher to approve it before you print a version for the recital hearing.

Plan as many public performances as possible between now and the recital, such as Wednesday recital, local schools, senior centers, churches, etc.

Four weeks (minimum) in advance:

Perform the hearing – a run-through of the complete recital (page-turner?). Members of the faculty panel must be present. It is expected that the recital will need only final polishing at this point. Based on the hearing performance, the panel will determine if the recital will go forward.

Record the hearing. Use it to fine-tune your performance.

Submit the printed program and program notes to the panel at the hearing.

Double check that you have turned in the recital request form that contains recording and staging instructions to Jeff Lee in the Music Department Office.

Secure a page-turner for the recital. Check with your accompanist.

Discuss concert attire with all participants. Everyone should be on the same level of formality.

Two weeks in advance

Prepare a poster – include composers, all participants, day/date/time/place. All postings must be approved in the music office.

Make any corrections to your program, and submit your final version of your program to your teacher. With your teacher's approval.

Begin to perform run-throughs of the entire program at the same time of day as your recital, if possible.

Observe all breaks and rests between pieces.

One - two days in advance:

Perform the dress rehearsal – a complete run-through. You may want to wear similar clothing – shoes, tie, flowing gowns, etc.

Discuss and practice stage entrances/exits and bows.

Make a note of anything not yet considered – staging instructions, special needs, mute stand, special lighting, etc.

Make a checklist of everything you will need at the recital – instruments, mutes, water, handkerchief, etc.

Plan the reception with family/friends.

Make preparations to pay your accompanist immediately after the recital. Include a thank-you note with the check.

PROFICIENCIES

For all Music Performance and Music Education majors, whose principal instrument is not piano, a piano proficiency must be passed. All students in these programs must enroll for Functional Piano every semester until the exam is passed. Note: Your senior recital may not be scheduled or performed until all three parts of the piano proficiency exam have been passed. See Ms. Gunnarson for more information.

Provide Aggie ID, Catalog Year, Degree, and Instrument to piano proficiency coordinator.

Piano Proficiency (secondary applied area)

Functional Piano III final exam:

1. Harmonize a simple melody (no chords provided) with all correct voicing. Include a secondary dominant chord (provided one week in advance)
2. Correctly realize the given chords of a simple melody (provided one week in advance)

Functional Piano IV midterm:

3. All major and harmonic minor scales, two octaves, hands separately
4. Major and minor arpeggios played two octaves, hands together in an alternating pattern of root, first inversion, and second inversion
5. Cadence patterns in all keys (including secondary dominant), major and minor, hands together

Functional Piano IV final exam:

6. Hymn (provided one week in advance)
7. Sight-read a simple piece (provided the morning of the exam).
8. Read two lines of an instrumental score: one transposing instrument, one concert pitch instrument (provided one week in advance)
9. Read soprano-tenor and alto-bass parts of a four-part vocal score (provided one week in advance). Transpose to concert pitch if applicable.

Each Music major must also pass a barrier in their principal instrument before being allowed to progress from MUSC 2510 to 330. (The same is also true from MUSC 330 to 430 -- not listed here.) This barrier is part of the student's jury at the end of the semester. This is often referred to as "jurying up" to the next level. The requirements (proficiencies) noted below must be met prior to, or in conjunction with, the barrier.

If a student attempts and fails any portion of this barrier three times, they will not be allowed to continue as a Music major. If extenuating circumstances exist, the student may appeal in writing to a faculty panel consisting of the Department Head, the student's applied instructor, and a third Music Faculty member, selected by the Department Head.

Piano Proficiency (principal applied area) (see Dr. Spitzer for more information)

1. Sight-reading: One piece at an early intermediate level, and one hymn.
2. Scales: Two octaves, hands together, major and harmonic minor, all keys (60 = 4 16th notes)
3. Arpeggios: Two octaves, hands together, major and harmonic minor, all keys (60 = 4 16th notes)
4. Cadences: I-IV-I-V⁷-I, hands together, in any major and minor keys
5. Harmonization: One melody selected from 10 assigned ones. Use at least one secondary dominant
6. Chord reading: Play the given chords to a folk tune and jazz standard in block chord form.
7. Transposition: Play the provided arrangement of Happy Birthday in any key.
8. Transcription: Transcribe Roland Pöntinen's *Improvisation on Promenade sentimentale* and play accurately with the recording.
9. Improvisation: Perform your own two-minute improvisation on *Promenade sentimentale*, using the same bass ostinato.
10. Popular styles improvisation: Perform a popular song (your choice) as written, then embellish, improvise, change figurations.
11. Blues: Play a 12-bar blues bass, then improvise a melodic line.
12. Figured bass: Write out the realization for three simple figured bass exercises, and play them accurately.
13. Accompaniment: Have performed at least one accompaniment in a lesson, studio class, or recital
14. Performance: Have performed successfully in at least one Wednesday recital and studio recital
15. Repertoire: Play 10 minutes of repertoire studied in lessons, representing 3 different style periods. Besides note and rhythmic accuracy, the jury performance must demonstrate tonal clarity and evenness, a relaxed posture and approach, fluidity of sound and movement, voicing, variety of touch, stylistic knowledge, and sufficient understanding of form and harmonic analysis. Repertoire must be at the level of a Bach 3-part invention, Beethoven Op. 49 sonatas, and Chopin Nocturne, Op. 9, No.1 in Bb minor. All music must be memorized.

Flute Proficiency (see Dr. Plominska for more information)

1. All major scales - full range of the instrument - quarter = 80-100
2. All harmonic minor scales - full range of the instrument - quarter = 80-100
3. Triad routine - from Wye - quarter = 100-120
4. Chromatic scales - from Taffanel EJ 5 - dotted quarter = 50-64
5. Major thirds - 2 octaves - quarter = 60-80
6. Minor thirds - 2 octaves - quarter = 60-80
7. Pass the woodwind jury and receive a majority recommendation vote from the woodwind faculty

to advance from 2510 to 330.

Oboe Proficiency

To advance from 2510 into 330, students must:

1. Play Scale Study (for the full range of the instrument) at quarter note = 88.
2. Play Articulation Study at quarter note = 112.
3. Play Chromatic Study for the full range of the instrument.
4. Play Long Tone Study (for the full range of the instrument) at quarter note = 50.
5. Pass the woodwind jury and receive a majority recommendation vote from the woodwind faculty to advance from 2510 to 330.

Clarinet Proficiency (see Dr. Moore for more information)

Requirements to be admitted into MUSC 330:

1. All Major Scales, root to root, from memory at a minimum of quarter = 60
2. Natural, Harmonic and Melodic minor scales, root to root, from memory at a minimum of quarter = 60
3. Baermann Major Scales and Arpeggios at a minimum of quarter = 60
4. Baermann Melodic Minor scales and arpeggios at a minimum of quarter = 60
5. Major Scales in Thirds at a minimum of quarter = 60
6. Melodic Minor Scales in Thirds at a minimum of quarter = 60

Saxophone Proficiency (see Dr. Taylor for more information)

To advance from 2510 into 330, students must:

1. Pass the Tuning Exam
2. Pass the Level 1 Scale Exam with a grade of 90% or higher
3. Pass the Listening Exams with an average of 70% or higher
4. Pass their jury and receive a majority recommendation vote from the woodwind faculty to move to 330

Bassoon Proficiency

To advance from 2510 into 330, students must:

1. Play Scale Study (for the full range of the instrument) at quarter note = 80.
2. Play Articulation Study at quarter note = 100.
3. Play Chromatic Irritation Study for the full range of the instrument.
4. Play Long Tone Study (for the full range of the instrument) at quarter note = 60.
5. Pass the woodwind jury and receive a majority recommendation vote from the woodwind faculty to advance from 2510 to 330.

Trumpet Proficiency Requirements (see Dr. Dalager for more information)

Requirements to be admitted to MUSC 330:

1. Scales:
 - a. All major and minor (natural, harmonic, and melodic) scales, memorized, across the student's available range in eighth notes at quarter = 120
 - b. Clarke - Technical Study #1 at dotted half = 60
 - c. Clarke - Technical Study #2 at quarter = 120
2. Transposition: Cafarelli - 100 Melodic Studies in Transposition #1 – 15 on Bb trumpet
3. Repertoire: Perform four or more works from the suggested 2510-level repertoire list (see syllabus) or similar
4. Jury: Pass the last jury with a score of 80+% for BME and 90+% for BM and a majority recommendation vote from the brass faculty to move to 330

Horn Proficiency (see Dr. Winter for more information)

Requirements to be admitted to MUSC 330:

1. Major and all minor scales, full range with arpeggios. Scales played by memory in random order, receiving a minimum grade of 90%. Quarter note = 60 in sixteenth notes
2. Chromatic scale, full range. Quarter note = 60 in sixteenth notes

3. Jury solo must be selected from the Sophomore level of the Horn Course of Study
4. Pass the brass jury and receive a majority recommendation vote from the brass faculty to advance from 2510 to 330.

Low Brass Proficiencies (see Dr. Kaplan for more information)

Requirements to be admitted to MUSC 330:

1. Students will be required to pass a 3rd/4th semester barrier in front of the jury committee.
2. This barrier will include a solo chosen from the second-year solo list or higher.
3. All sophomore level scales and patterns from Milt Stevens must be passed at 80% or higher to move up to the 330 level. Be able to perform ALL of the sophomore scales staccato at a tempo of Quarter note = 88.
4. Kitzman Proficiency
5. Pass the brass jury and receive a majority recommendation vote from the brass faculty to advance from 2510 to 330.

Percussion Proficiency (see Dr. Bugbee for more information)

To advance beyond MUSC 2510 students must complete the following:

1. Completion of all assigned material in MARIMBA 101: Fundamental Studies in All Keys by Fred Bugbee
2. Completion of all assigned material in Portraits in Rhythm by Anthony Cirone
3. Completion of all assigned material in Savage Rudimental Workshop by Matt Savage

Voice Proficiency (see Dr. Daughtrey for more information)

At the completion of four (4) semesters at the MUSC 2510 level, all Voice Majors must apply for advancement to MUSC 330 in their voice jury. This jury will also serve as the Voice Proficiency. In order to advance, the student must demonstrate proficiency in all of the expectations for MUSC 2510, semesters 3 & 4 (see Syllabus), as well as demonstrating the ability to successfully perform the required exercises and scales. This jury will also be used to determine eligibility to continue as a Performance Major (Bachelor of Music). Discuss the possibility of advancement with your studio teacher and indicate your desire to apply for advancement on your jury sheet.

1. Be prepared to sing a total of six (6) songs in four (4) languages: English, Italian or Spanish, French, and German;
2. Demonstrate appropriate technique: intonation, rhythm, dynamics, phrasing, clarity, resonance, and breath management skills;
3. Be able to identify the form of songs and arias studied.
4. Be prepared sing all forms of scales (major, minor, chromatic & melodic and harmonic minor) as well as selected exercises from Vaccai's "Practical Method of Italian Singing." These will be prepared by the student, outside of their studio lessons. Please see the Voice Area Coordinator (Dr. Daughtrey) for detailed instructions.

Violin Proficiency (see Mr. Vega-Albela for more information)

To advance from 2510 into 330, students must:

1. Perform any major or minor scale and arpeggios in 3 octaves.
2. Perform scales in thirds, sixths and octaves in all major and minor keys (see syllabus for details).
3. Perform an etude from one of the advanced method books by memory on technical jury and receive a minimum grade of B (see syllabus for more details).
4. Perform by memory a movement from a major concerto of the standard repertoire and a movement from an unaccompanied Bach suite (see syllabus for details and repertoire lists).

Viola Proficiency (see Mr. Martinez-Rios for more information)

To advance from 2510 into 330, students must:

1. Perform any major or minor scale and arpeggios in 3 octaves.
2. Perform scales in thirds, sixths and octaves in all major and minor keys (see syllabus for details).
3. Perform an etude from one of the advanced method books by memory on technical jury

and receive a minimum grade of B (see syllabus for more details).

4. Perform by memory a movement from a major concerto of the standard repertoire and a movement from an unaccompanied Bach work (see syllabus for details and repertoire lists)

Cello and Bass Proficiency (see Mr. Espinoza for more information) To advance from 2510 into 330, students must:

1. For Cello:
 - Perform any major or minor scales and arpeggios in 3 octaves.
 - Perform by memory a movement from a major concerto of the standard repertoire and a dance from an unaccompanied suite by Bach (see syllabus for details and repertoire lists).
2. For Double Bass:
 - Perform any major or minor scales and arpeggios in 2 octaves
 - Perform an etude from one of the advanced method books by memory on technical jury and receive a minimum grade of B (see syllabus for more details).
 - Perform by memory 2 contrasting movements from a sonata of the standard repertoire (see syllabus for details and repertoire lists).

Teacher Education Program (TEP)

Each Music Education major must complete the following in order to student teach and be licensed:

1. To apply for the TEP in the Music Department follow steps as indicated below:

Part I: Complete TEP Application Packet

Students will complete the online application found on the HEST website. This includes a resume, application letter, and supporting materials.

Part II: Sophomore Interview

The second portion is designed to measure your social and communication skills, professionalism, self-evaluation abilities, and writing skills.

2. The semester before student teaching, fill out the STEP Packet found on the HEST website.
3. One semester before student teaching, make arrangements through the Music Ed coordinator for placement with a cooperating public-school teacher.
4. Attend all the meetings scheduled in the College of Education for student teachers.
5. All Music courses, proficiencies and the Senior Recital must be complete before student teaching.

MUSIC ENSEMBLES

University Singers (MUSC 2120/368)

University Orchestra (MUSC 2120/362)

Concert Choir (MUSC 2120/361)

Jazz Bands (MUSC 2130/363)

Percussion Ensemble (MUSC 2132/374)

Roadrunner Revue Pep Band (MUSC 2110)*

Opera Workshop (MUSC 2993/351)

Masterworks Chorus (MUSC 2110)*

Wind Symphony (MUSC 2120/370)

Symphonic Band (MUSC 2120/380)

"Pride" Marching Band (MUSC 2120/372)

Chamber Ensembles (MUSC 2110/3)

* These ensembles will not fulfill degree requirements for Music majors.

All students majoring in Music must enroll and participate in the ensemble appropriate for their particular degree plan. The appropriate ensemble will be determined by degree requirements in consultation with the student's advisor and ensemble directors. The student must enroll each and every semester they are considered full-time until the degree requirements are met, for a minimum of 8 semesters (7 semesters for Music Education majors). Any student receiving any kind of financial assistance through the Music Department must enroll each and every semester, for the ensemble designated in the scholarship agreement letter, while they are attending NMSU and receiving the funds.

CONCERT/RECITAL ATTENDANCE (MUSC 1310)

To earn a degree in Music each student must attend a predetermined number of concerts and recitals each semester. MUSC 1310 is the course that documents this attendance.

The student must attend:

- the first meeting (the first Wednesday of the semester at 3:30 p.m. in the Recital Hall)
- the Honors Recital (generally, at the very end of the semester)
- 12 Wednesday Recitals (in addition to the first meeting) (3:30 p.m. in the Recital Hall)
- 6 evening recitals/concerts

The student must receive a printed program before the performance begins. At the end of the performance the student must sign their program, write their Aggie ID on it, and turn it in to the attendant at the door or slide it under the door of the main Music office (Room 101). Programs will not be available to students after the performance begins. Programs will not be accepted any later.

Attempting to gain credit for recitals/concerts by partial or "proxy" attendance will be considered academic dishonesty and grounds for a failing grade in the course.

A student will not receive recital credit for a performance in which they are the only performer or one in which they participate in an entire ensemble performance.

If a student needs to make up a missed Wednesday Recital, they may attend 2 additional evening performances.

Any student wishing to attend an off-campus event for credit must have the event approved by the instructor of MUSC 1310 beforehand. The request needs to be made in writing by email.

FACILITIES USAGE

General Use

All areas of the Music Center should be treated with respect and care. We want to be able to take pride in our facilities. We want to present a professional and welcoming environment to all who enter our building, whether it be students, guest artists, or patrons. Any abuse by a student will be subject to disciplinary action.

Lobby Area

The lobby area is the first impression we give to the public. It should remain clean and appropriately arranged at all times.

- There should be no food eaten in the lobby area, with the exception of scheduled receptions
- None of the furniture should be moved without consent from the Music Office
- Tables and chairs from other rooms should not be left in the lobby for any reason
- No instrument or instrument case should be on the furniture for any reason
- No rehearsals or "work-outs" are allowed in the lobby area

- Any student abusing an item of furniture will be charged full replacement price of the item
- Any item left in the lobby overnight will be removed and held in the Music office for a week before it is discarded

Postings

There are numerous bulletin boards in the Music Center, as well as the information screen in the main lobby. All posters and flyers should be placed, with permission, on the appropriate bulletin boards. All Music Department sponsored events may request to have a flyer/poster displayed on the main screen (contact Rena in the Music office). No postings are allowed on any "finished" surface. This includes painted and varnished areas, including walls and doors. With permission, items may be posted on glass areas as long as they are cleanly removed when their purpose has been served.

Recital Hall, Rehearsal Halls, Classrooms

Any and all activities occurring in the Atkinson Recital Hall, rehearsal halls, and classrooms must be scheduled through the Scheduling Office. No student or group will be allowed to use these facilities without making arrangements prior to the event. If a classroom space is unscheduled and unoccupied, a faculty member may utilize it without making prior arrangements.

A student may only schedule a Music Department space with the authorization of a Music faculty member or Department Head. An email to the Scheduling Coordinator from the faculty member will suffice.

All the spaces mentioned above must be locked and secured immediately after the scheduled event. Arrangements must be made prior to the event if a key needs to be available to lock the doors.

Practice rooms

The practice rooms are made available only to Music majors and minors for the purpose of personal musical practice and rehearsal. Any other use, such as the teaching of private lessons, must be approved through the Music Office. Any music major wishing to use a practice room to teach private lessons must document that usage with the Music Office. The practice rooms are not to be used for any purpose by anyone not currently enrolled as a music student.

Copier

Students may use the copier in the Music Office (see the departmental administrative assistant). The charge is 10 cents per copy. (see Copyright Policy below)

Fax Machine

With prior permission, students may use the fax machine in the main office to send and/or receive faxes (see Rena). The charge is one dollar per page.

ACADEMIC INTEGRITY

At the university level of the student's education, honesty and integrity are expected in all approaches to learning. In order to maintain academic honesty and integrity two primary areas must be addressed.

Plagiarism (exemplified by but not restricted to):

- The offering of any work done by another as your own work
- Using quotations or the paraphrase of a quote within your work without citing the source
- Using a paper for one course that was prepared for another course without both instructors' knowledge and permission

Academic Honesty (exemplified by but not restricted to):

- Providing your fair share of input and effort for all group work that is required in a course
- Preparing for every class that you attend. This includes careful reading of assignments, being prepared to participate in discussions and completing any mini-assignments
- Preparing the answers for take home exams using the appropriate materials but without

assistance of any other person or persons

- Refraining from giving, receiving, or obtaining information about exams unless authorized by the instructor
- Refraining from consulting with others during exams or classroom discussions unless explicitly authorized to do so by the instructor

All acts of plagiarism or violations of academic honesty are considered serious offenses and may result in failure of the assignment or the course.

Copyright Policy

In recognition and support of the Copyright Act of 1976 the policy of the Music Department regarding photocopying of music is as follows:

YES: 1. Emergency copying to replace purchased copies which for any reason are not available for an imminent performance, provided purchased replacement copies are ordered and substituted in due course to replace them.

2. For academic purposes other than performance, single or multiple copies of excerpts of works may be made, provided they do not make up a performable unit such as a section, movement or aria, but in no case more than ten (10) per cent of the whole work. The number of copies shall not exceed more than one copy per pupil. In other words, one can copy brief portions of works for study. This is limited to classroom use.

NO: 1. Copying to create or replace or substitute for anthologies, compilations, or collective works (for example, copying applied music repertoire).

2. Copying of or from works intended to be "consumable" in the course of study or teaching such as workbooks, exercises, standardized tests and answer sheets and like materials.

3. Copying for the purpose of performance except for emergency copying to replace purchased copies as outlined in YES #1. In other words, if you plan to perform it, DON'T COPY IT!!

4. Copying for the purpose of substituting for the purchase of music.

5. Copying without inclusion of the copyright notice that appears on the printed copy.

ADDITIONAL MATTERS:

1. Permission for exceptions to the above rules may be requested from the copyright holder.

2. Similar copyright and performing rights are applicable to recordings, performances, arrangements, and adaptations.

3. UNDER NO CIRCUMSTANCES (except YES, #1 above) WILL PHOTOCOPIES BE ALLOWED IN APPLIED MUSIC LESSONS OR PERFORMANCES.

4. Consult the faculty or staff for more information.

HEALTH AND SAFETY

Hearing Health

Hearing health is essential to your lifelong success as a musician. Your hearing can be permanently damaged by loud sounds, including music. Technically, this is called Noise-Induced Hearing Loss (NIHL). Such danger is constant.

Noise-induced hearing loss is generally preventable. You must avoid overexposure to loud sounds, especially for long periods of time.

The closer you are to the source of a loud sound, the greater the risk of damage to your hearing mechanisms.

Sounds over 85 dB (your typical vacuum cleaner) in intensity pose the greatest risk to your hearing. Risk of hearing loss is based on a combination of sound or loudness intensity and duration.

Recommended maximum daily exposure times (NIOSH) to sounds at or above 85 dB are as follows:

- 85 dB (vacuum cleaner, MP3 player at 1/3 volume) – 8 hours
- 90 dB (blender, hair dryer) – 2 hours
- 94 dB (MP3 player at 1/2 volume) – 1 hour
- 100 dB (MP3 player at full volume, lawnmower) – 15 minutes
- 110 dB (rock concert, power tools) – 2 minutes
- 120 dB (jet planes at take-off) – without ear protection, sound damage is almost immediate

Certain behaviors (controlling volume levels in practice and rehearsal, avoiding noisy environments, turning down the volume) reduce your risk of hearing loss. Be mindful of those MP3 earbuds. See chart above. The use of earplugs and earmuffs helps to protect your hearing health.

Day-to-day decisions can impact your hearing health, both now and in the future. Since sound exposure occurs in and out of school, you also need to learn more and take care of your own hearing health on a daily, even hourly basis. It is important to follow basic hearing health guidelines. It is also important to study this issue and learn more.

If you are concerned about your personal hearing health, talk with a medical professional. If you are concerned about your hearing health in relationship to your program of study, consult your advisor, ensemble director, or Rena Crollett in the Music Office.

This information is provided by the National Association of Schools of Music (NASM) and the Performing Arts Medicine Association (PAMA). For more information, check out the other NASM-PAMA hearing health documents, located on the NASM Web site. <http://nasm.arts-accredit.org>

Neuromusculoskeletal Health

Neuromusculoskeletal health is essential to your lifelong success as a musician. Practicing and performing music is physically demanding and musicians are susceptible to numerous neuromusculoskeletal disorders. Some musculoskeletal disorders are related to behavior; others are genetic; still others are the result of trauma or injury. Some genetic conditions can increase a person's risk of developing certain behavior-related neuromusculoskeletal disorders. Many disorders and conditions are preventable and/or treatable.

Below are some suggestions to help you protect yourself:

- Sufficient physical and musical warm-up time is important.
- Good posture and correct physical technique are essential.
- Regular breaks during practice and rehearsal are vital in order to prevent undue physical stress and strain.
- It is important to set a reasonable limit on the amount of time that you will practice in a day.
- Avoid sudden increases in practice times.
- Know your body and its limits, and avoid "overdoing it."

- Maintain healthy habits.
- Safeguard your physical and mental health.

Day-to-day decisions can impact your neuromusculoskeletal health, both now and in the future. Since muscle and joint strains and a myriad of other injuries can occur in and out of school, you also need to learn more and take care of your own neuromusculoskeletal health on a daily basis, particularly with regard to your performing medium and area of specialization.

If you are concerned about your personal neuromusculoskeletal health, talk with a medical professional.

If you are concerned about your neuromusculoskeletal health in relationship to your program of study, consult advisor, ensemble director, or Rena Crollett in the Music Office.

This information is provided by the National Association of Schools of Music (NASM) and the Performing Arts Medicine Association (PAMA). For more information, check out the other NASM-PAMA neuromusculoskeletal health documents, located on the NASM Web site. <http://nasm.arts-accredit.org>

Vocal Health

Vocal health is important for all musicians and essential to lifelong success for singers. Understanding basic care of the voice is essential for musicians who speak, sing, and rehearse or teach others. Practicing, rehearsing, and performing music is physically demanding. Musicians are susceptible to numerous vocal disorders. Many vocal disorders and conditions are preventable and/or treatable.

Below are some suggestions to help you protect yourself:

- Sufficient warm-up time is important.
- Begin warming up mid-range, and then slowly work outward to vocal pitch extremes.
- Good posture, adequate breath support, and correct physical technique are essential.
- Regular breaks during practice and rehearsal are vital in order to prevent undue physical or vocal stress and strain.
- It is important to set a reasonable limit on the amount of time that you will practice in a day.
- Avoid sudden increases in practice times.
- Know your voice and its limits, and avoid overdoing it or misusing it.
- Maintain healthy habits.
- Safeguard your physical and mental health.
- Drink plenty of water in order to keep your vocal folds adequately lubricated.
- Limit your use of alcohol, and avoid smoking.
- Avoid shouting, screaming, or other strenuous vocal use.

Day-to-day decisions can impact your vocal health, both now and in the future. Since vocal strain and a myriad of other injuries can occur in and out of school, you also need to learn more and take care of your own vocal health on a daily basis.

If you are concerned about your personal vocal health, talk with a medical professional. If you are concerned about your vocal health in relationship to your program of study, consult your advisor, ensemble director, or Rena Crollett in the Music Office.

This information is provided by the National Association of Schools of Music (NASM) and the Performing Arts Medicine Association (PAMA). For more information, check out the other NASM-PAMA neuromusculoskeletal health documents, located on the NASM Web site. <http://nasm.arts-accredit.org>

Student Complaint Policy

Students wishing to file an academic complaint or grade appeal are referred to the NMSU policy page: <https://report.nmsu.edu/decision-tree/>

O.I.E. complaints may be registered here: <https://equity.nmsu.edu/>

MASTER OF MUSIC

The Master of Music degree is offered in the following areas of study: Conducting, Music Education, and Performance. Applicants are expected to have an undergraduate degree in Music or Music Education equivalent to that represented by the B.M. or B.M.E. degree from NMSU. To be admitted into the Music Education track, the student must have an undergraduate degree in Music Education complete with licensure. The Music Department does not require the Graduate Record Exam, but does expect each applicant to possess graduate-level language and writing skills.

For **admission** into the Master of Music degree program, all applicants must have an undergraduate GPA of at least 3.0 and submit at least two letters of recommendation from music professionals. An audition, either in person or by recording, is required for entrance into the Performance or Conducting program. Auditions will be based upon, but not limited to, prescribed repertory. The application deadline to be considered for a Graduate Assistantship is March 1 but may be extended. The application deadline for Fall enrollment is May 1 but may be extended. Spring and Summer admissions are possible depending on which degree track a student selects and what other classes are being offered in a given semester. Contact Dr. James Shearer, Graduate Music Coordinator, for more information on Spring and Summer application deadlines.

Note: The degree offered is a Master of Music. The student's official transcript and diploma will only indicate that degree. The area of study (Conducting, Music Education, Performance) will not be included as part of the official degree title.

Program of Study and Committee Selection

After admission, each student must successfully complete MUSC 471 before subsequent enrollment in other music theory courses. He or she must also successfully complete MUSC 477 before subsequent enrollment in other music history courses.

During the first semester of study, a tentative Program of Study is planned, documented and filed by the student in consultation with the advisor in his or her major field. The Program of Study is subject to approval by the Music Department Head and the Graduate Music Committee. The student will also select, in consultation with his or her advisor, an advisory committee consisting of the advisor and two additional faculty members.

Recital Requirements for Performance and Conducting

A graduate recital plus an analytical paper are required of all candidates in Performance and Conducting. Students must be enrolled in their applied area during the semester the recital is given. A minimum of 60 minutes of music is required for all Performance recitals. A minimum of three major works for the appropriate ensemble is required for all Conducting recitals. The recital may only be given after at least 6 hours of graduate applied or conducting courses have been successfully completed.

Working in conjunction with the advisor/studio instructor, each conducting and performance recital candidate will complete a scholarly analytical paper, roughly 4,000 – 6,000 words, including clear figures and score examples as needed. The paper can cover detailed information on all of the works on a given recital (or in a series of recitals for conducting students only), or it can focus on one work, composer, or style of music, again, depending on advisor approval. The paper should be written in third person only, avoid contractions, colloquialisms, and other poor forms of writing. In addition, the paper must be fully documented following the standard Turabian format with both footnotes and a bibliography page.

The final analytical paper will be evaluated by the student's recital committee and their critiques shared with the studio instructor. Along with the instructor, this committee will consist of two other faculty members from the NMSU Music Department. The committee will also attend or view the candidate's recital(s) and provide a critique to the studio instructor.

With approval of the graduate coordinator and the student's advisor, this analytical paper project can be replaced with a more detailed thesis project, which requires an extra 4 – 6 credit hours.

A suggested weighting of MUSC 540 grades will be:

60% - recital performance

10% - recital program note

30% - scholarly analytical paper

Candidacy

In order to qualify for candidacy the student must meet the Graduate School requirement of 12 credits of graduate work in residence (except those in the online Music Education program) and must show evidence of a satisfactory quality of work in the required courses, demonstrate the desired progress in his or her performance area and, where required, submit a recital program, thesis topic, or project proposal for approval.

Music Education Final Capstone Project

Students on the music education track must complete a final capstone project that is either a 4-credit hour primary research project (MUSC 598) or a more detailed 6-credit hour thesis project. All primary research projects will be assigned an advisor, and all thesis projects will work with a full committee selected by the student's primary advisor and the student. The thesis project is optional, but it is encouraged for students considering completion of a terminal degree at some point in their career. Topics in both the capstone project and the thesis can include objective survey projects, subjective analytical projects, and various specific topics as agreed to by primary advisor and/or thesis committee

Thesis

A thesis is optional in Music Education and is encouraged for students considering completion of a terminal degree. Music Education candidates not writing a thesis must develop and complete an approved project before the oral examination.

Final Examination

All Master of Music candidates must take a final comprehensive oral examination that will cover your primary area of study, along with extensive consideration of the candidate's general body of knowledge in the areas of music theory and history. The final oral examination may not be scheduled until the graduate recital (with analytical paper) or the final capstone project has been completed and approved. All papers must be submitted in final form to the orals committee a minimum of two (2) weeks before the final orals examination. Note that oral exams with a full thesis require a much earlier date each semester than other projects, and students must take these deadlines into account when making final graduation plans. Check the NMSU Graduate School Calendar for detailed information regarding scheduling each semester.

Committee votes will include the options of pass, adjourn, and fail. Committees who adjourn without a final decision will indicate to the student what is required to achieve a successful passing result, along with a timeline for completion of the orals exam. Students who fail their orals exam will have a second chance to attempt the orals exam in the following semester. Students who fail their orals on their second attempt will not be awarded a degree from NMSU, and no further orals exam attempts will be allowed.

At the discretion of the primary advisor, a preliminary orals review may be required that must be passed before the student is allowed to sit for their Final Orals Examination Barrier. The preliminary review committee will consist of the primary advisor and two other graduate faculty members from the NMSU Music Department. The appointed Dean's Representative will not take part in any preliminary orals review.

Fees

Fees, in addition to tuition, will be assessed for all applied hours and recitals. See page 6 for details.

ACADEMIC REQUIREMENTS FOR GRADUATE ASSISTANTS

Graduate Assistants must be enrolled in nine credit hours. Graduate Assistants in their last semester may file a request for waiver allowing them to take six credit hours rather than nine.

WORKLOAD

A. It is understood that bargaining unit members are engaged in professional activities of such a nature that the output produced, or the result accomplished, cannot be precisely standardized or measured in relation to a given period of time and that the time necessary to accomplish an assignment will vary.

B. The appointment level shall be based on the appointing department's determination of the amount of time it should normally take to perform the assigned duties. For example, a 0.50 FTE is an average of 20 hours per week and a bargaining unit member appointed at 0.50 FTE will not normally be expected to work more than 20 hours per week on a continual basis. However, the average number of hours per week over the course of a full appointment period is an estimate rather than an exact time specification. Bargaining unit members should address concerns regarding workload with their immediate supervisor at any time the bargaining unit member anticipates or experiences any workload related issues.

INTERNATIONAL STUDENTS

International graduate students should consult with ISSS for additional information.

<https://issn.nmsu.edu/>

HEALTH AND SAFETY

The University shall provide a safe working environment that complies with State and Federal laws. Students shall notify the University in writing of any safety or health concerns. If the Union determines a safety issue exists that has not been resolved by the immediate supervisor, a Union steward may request a labor management meeting to address the safety concerns.

GRIEVANCE PROCEDURE

A. The purpose of this procedure is to secure at the lowest possible level, mutually satisfactory resolutions to grievances, which may arise during the term of this Agreement and are subject to resolution under this Agreement. This grievance procedure shall be the sole and exclusive method of resolving disputes involving the application and/or interpretation of the terms and provisions of this Agreement and waive any right to challenge any right or benefits set forth in this Agreement in another forum. Alleged violations of statutes or regulations that do not allege a violation of this collective bargaining agreement may be filed with the enforcing agency or applicable University office and are not waived.

B. A "grievance" is defined as an alleged violation, misapplication, or misinterpretation of a specific Article or Section of this Agreement, University policy, rules, regulations, or mid- contract termination of an assistantship. Not offering subsequent assistantships or termination based on academic reasons are not grievable.

C. A "grievant" is a bargaining unit member or a group of bargaining unit members making a claim.

D. "Days" shall mean business days in which the University business offices are open.

E. A written grievance must contain a statement of the grievance, the name of the bargaining unit member(s) or designation of entire bargaining unit or group of bargaining unit members as the grievant, the supervisor/administrator alleged to have committed the violation, the circumstances and facts upon which it is based, the date of the alleged violation, the date of submission of the grievance, the specific section of this agreement, University policy, rule, or regulation allegedly violated, and the specific remedy being sought. Statements such as "to be made whole", without the additional specification of a remedy, shall not constitute sufficient notice of the remedy being sought by the grievant.

F. Grievances affecting a group of bargaining unit members in more than one School, College, or Research Center may be initiated at Step Two.

G. Grievances and responses are considered filed on the date they are sent via email or received via hand-delivery.

H. A grievance shall be filed within ten (10) days following the date the grievant knew or should have known of the act or the condition which gave rise to the grievance. Failure to timely file the grievance will constitute forfeiture of the right to file. Furthermore, any grievance determination not appealed to the succeeding level within the time limits expressed herein shall be considered null and void and closed. When it is mutually agreed by the parties in writing, the time limits expressed herein may be extended. A grievance may be withdrawn at any step of this procedure by the grievant.

I. Should the University fail to respond to a grievance within the time limits expressed herein, the Union/grievant may appeal to the next level of the grievance procedure within the time limits set forth as if the University had timely responded.

J. A bargaining unit member grievant may be accompanied by a Union steward, selected or approved by the Union, at any stage of the grievance procedure. Nothing herein contained shall be considered as limiting the rights of a bargaining unit member to discuss or process their grievance as an individual. In such cases, the bargaining unit member will provide the Union with a copy of the grievance at the same time it is filed with the University. An individual pursuing a grievance without Union representation will be responsible for all associated costs. In such cases the Union has the right to be present at all levels as a party in interest. No resolution of any individually processed grievance shall be inconsistent with the terms of this Agreement.

K. Grievances shall be presented as outlined below:

Informal Step – A bargaining unit member who believes that they may have a grievance, shall meet with the bargaining unit member's immediate supervisor and/or department head in a good faith attempt to resolve the grievance. If the grievance is not resolved within ten (10) days of the date the grievant knew or should have known of the act or condition giving rise to the grievance, the bargaining unit member may file the written grievance at Step One as set forth in G., above.

Step One – A bargaining unit member shall file a written grievance with the bargaining unit member's Dean of the College in which the grievant is employed within the time limit described in G. above. A meeting with the Dean or designee will be held within seven (7) days of the filing of the grievance. The Dean/designee will provide a written response to the grievance within ten (10) days following receipt of the grievance. If the matter is not resolved to

the satisfaction of the bargaining unit member within ten (10) days of the date of the Dean/designee's response, the bargaining unit member may file a written grievance at Step Two.

Step Two – Within ten (10) days of the date of the Dean/designee's written response at Step One, the written grievance must be filed with the Provost. A meeting with the Provost or designee will be held within seven (7) days of the filing of the grievance. The Provost/designee will provide a written response to the grievance within ten (10) days following receipt of the grievance.

Arbitration Step:

A. In the event the grievant is not satisfied with the decision at Step Two of the Grievance Procedure, the decision may be appealed to arbitration by filing a written appeal with the Provost with a copy to General Counsel within twenty (20) days of receipt of the Provost/designee's decision along with a copy of the request for arbitration panel that the grievant has filed with the Federal Mediation and Conciliation Service (FMCS) within fifteen (15) days of receipt of the Provost/designee's decision. The request to FMCS shall demand a panel of seven (7) arbitrators from the region that includes New Mexico. Each party retains the right to request a second panel of seven (7) arbitrators from the region that includes New Mexico within five (5) days of receipt of the panel. The parties will meet to strike names from the list of arbitrators within fifteen (15) days of receipt of the list. Each party will strike one name followed by the other party striking one name until a single name remains, who shall become the Arbitrator. The party required to strike the first name will be the grievant.

B. If an issue of arbitrability exists, the Arbitrator shall determine such issues by briefs prior to scheduling the merits hearing. If the Arbitrator determines the grievance to be arbitrable, the case will proceed to a hearing on the merits. If prehearing briefs are not submitted, the grievance will advance to arbitration. A hearing on the merits of the grievance shall occur within three (3) months of notification of selection of the Arbitrator. Failure of the grievant and/or union to advance the grievance to a hearing within this time limit will render the matter closed and not subject to arbitration.

C. The Arbitrator is limited to interpreting and applying the language in the agreement. The Arbitrator shall not add to, subtract from, or alter the Agreement in any way, nor shall the Arbitrator substitute their discretion for the University where such discretion is retained by the University. The Arbitrator's decision is limited to the precise issue submitted for arbitration. The Arbitrator shall prepare and submit a written decision to the parties, which shall include the decision, rationale, findings of fact, conclusions of law, and if appropriate, relief, within thirty (30) calendar days after the close of the hearing, which may include submission of post-hearing briefs. The decision of the Arbitrator is final and binding on the parties, subject to appeal as set forth in the Uniform Arbitration Act for compulsory arbitration.

D. The Arbitrator's charges for services and costs for a Court Reporter and transcripts, if requested by the Arbitrator, shall be shared equally by the parties.

E. Each party is responsible for its representation and witness costs.

F. A bargaining unit member who must miss work to attend an arbitration as a grievant, witness, or representative shall request leave without pay from the member's immediate supervisor and provide documentation of their required attendance as soon as possible after learning their presence is required. A teaching assistant shall be responsible for arranging at least twenty (20) calendar days in advance for a suitable replacement to teach the class, subject to the approval of the replacement by the department chair or immediate supervisor

Course Requirements for Master of Music

PERFORMANCE	
Graduate Theory Review (MUSC 471) *	3 cr
Graduate History Review (MUSC 477) **	3 cr
Music Theory (MUSC 511, 513, or 518)	3 cr
Music History and Literature (MUSC 513, 519, 520, 521, 522, 523, or 529)	3 cr
Applied (MUSC 582)	8 cr
Ensemble (MUSC 580)	2 cr
Pedagogy and Literature (MUSC 486 and 586)	4 cr
Research Methods (MUSC 450)	3 cr
Recital and Analytical Paper (MUSC 540)	4 cr
Total	33 credits

CONDUCTING	
Graduate Theory Review (MUSC 471) *	3 cr
Graduate History Review (MUSC 477) **	3 cr
Advanced Instrumental Literature (MUSC 579) OR Advanced Choral Literature (MUSC 578)	3 cr
Music Theory (MUSC 511, 513, or 518)	3 cr
Music History and Literature (MUSC 513, 519, 520, 521, 522, 523, or 529)	3 cr
Conducting (Instrumental - MUSC 475, 576, and 577) (Choral - MUSC 475, 574, and 575)	9 cr
Ensemble (MUSC 580)	2 cr
Research Methods (MUSC 450)	3 cr
Recital and Analytical Paper (MUSC 540)	4 cr
Total	33 credits

MUSIC EDUCATION (on campus and online)	
Graduate Theory Review (MUSC 471) *	3 cr
Graduate History Review (MUSC 477) **	3 cr
Music Theory (MUSC 511, 513, or 518)	3 cr
Music History and Literature (MUSC 513, 519, 520, 521, 522, 523, or 529)	3 cr
Music Education (MUSC 530, 531, and 535)	9 cr
Research Methods (MUSC 450)	3 cr
Approved Elective	3 cr
Thesis (MUSC 599 – 6 credits) or Project (MUSC 598 – 4 credits)	4-6 cr
Total	31-33 credits

Students must make the grade of B or better in a course for it to count toward degree completion.

* Students must make a B or better in MUSC 471 before taking additional music theory courses.

** Students must make a B or better in MUSC 477 before taking additional music history courses.

NOTE: A B- is considered less than 3.0 in the university grading scale.

Course Subject and Title <small>Shaded Courses are Major requirements</small>	Credit Hours	Completed	Minimum Grade	Additional Degree Requirement Notes
TERM 1 (Fall)				TOTAL CREDITS 15.5
MUSC 1310 - Concert & Recital Attendance	0.5		S	
MUSC 1450 - Ear Training I	1		C-	
MUSC 1460 - Music Theory I	3		C-	
MUSC 1470 - Functional Piano	2		C-	
MUSC 2510 - Applied Music	1 or 2		C-	
Major Ensemble (2000 level)	1		C-	
ENGL 1110G - Rhetoric/Composition	4			
MATH 1130G - Math Appreciation or any Area II	3 or 4			
TERM 2 (Spring)				TOTAL CREDITS 15.5
MUSC 1310 - Concert & Recital Attendance	0.5		S	*Not required
MUSC 1451 - Ear Training II	1		C-	
MUSC 1461 - Music Theory II	3		C-	
MUSC 1471 - Functional Piano II (Suggested)*	2		C-	
MUSC 2510 - Applied Music	1 or 2		C-	
Major Ensemble (2000 level)	1		C-	
AREA III or IV (3 or 4)	3 or 4			
ENGL 2210G or ENGL 2221G	3			
Minor Field Course	3			
TERM 3 (Fall)				TOTAL CREDITS 13.5
MUSC 1310 - Concert & Recital Attendance	0.5		S	
MUSC 2310 - Sound & Music Technology	1		C-	
MUSC 2451 - Ear Training III	1		C-	
MUSC 2460 - Music Theory III	3		C-	
MUSC 2510 - Applied Music	1 or 2		C-	
Major Ensemble (2000 level)	1		C-	
COMM 1115	3			
Area IV Course	3			
TERM 4 (Spring)				TOTAL CREDITS 16.5
MUSC 1310 - Concert & Recital Attendance	0.5		S	*Not required, but are prerequisites for MUSC 413 and 415
MUSC 2452 - Ear Training IV (Suggested)*	1		C-	
MUSC 2461 - Music Theory IV (Suggested)*	3		C-	Submit program of study form to B.A. Degree Coordinator
MUSC 2240 - Hist/Lit Antiquity through Baroque	3		C-	
MUSC 2510 - Applied Music	1 or 2		C-	
Major Ensemble (300 level)	1		C-	
Area III Course - PHYS 120G - Suggested	4			
AREA V	3			
Term 5 (Fall)				TOTAL CREDITS 15
MUSC 325 - Beginning Conducting	1		C-	
MUSC 330 - Applied Music	1 or 2		C-	
Major Ensemble (300 level)	1		C-	
300 Level Music Elective	3		C-	
MUSC 302 - Hist/Lit Classic through Romantic	3		C-	
AREA III or IV (3 or 4) – if needed	3 or 4			
Minor Field Course	3			
TERM 6 (Spring)				TOTAL CREDITS 17
300 Level Music Elec.	3		C-	Make appointment with BA Coordinator to discuss Capstone prior to Spring Break
MUSC 330 - Applied Music	1 or 2		C-	Submit program of study form to B.A. Degree Coordinator by first week of April
Major Ensemble (300 level)	1		C-	
MUSC 303 - Hist/Lit 20 th Century through Present	3		C-	
Minor Field Course (Upper Division)	6			
Elective Course (Upper Division) as needed	3			
TERM 7 (Fall)				TOTAL CREDITS 16
Major Ensemble (300 level)	1		C-	Schedule appointment with Center for Academic advising to request alternative 9 credit fulfillment of Gen. Ed. Area VI and VII
400 level music elective	3		C-	
VWW Courses	3			
Minor Field Course (Upper Division)	3			Enroll in MUSC 341 Fall or Spring
Elective (Upper Division) as needed	6			File CAPSTONE Project Approval Form by the first three weeks of the semester of enrollment If Needed, CAPSTONE Project Change/Update Form must be filed within the first six weeks of the semester of enrollment
TERM 8 (Spring)				TOTAL CREDITS 14
MUSC 341 - BA Capstone	1 or 2		C-	Upper Division Courses- a minimum of 48 credits in courses numbered 300-499/3000-4999.
400 level music elective	3		C-	Residency – Of the last 36 credits earned toward award of the degree:
VWW Courses	3			a. 30 credits must be completed at NMSU
Elective as needed	1-2			b. 21 credits must be upper-division (300/3000 or above)
Electives (Upper Division) as needed	6			c.12 of the 21 upper-division credits must be within the major.

Course Subject and Title	Credit Hours	Completed	Minimum Grade	Additional Degree Requirement Notes
Shaded Courses are Major requirements				
TERM 1 (Fall)				TOTAL CREDITS 15.5
MUSC 1310 - Concert & Recital Attendance	0.5		S	
MUSC 1450 - Ear Training I	1		C-	
MUSC 1460 - Music Theory I	3		C-	
MUSC 1470 - Functional Piano	2		C-	
MUSC 2510 - Applied Music	1 or 2		C-	
Major Ensemble (2000 level)	1		C-	
ENGL 1110G - Rhetoric/Composition	4			
MATH 1130G - Math Appreciation	3			
THEA 1223 - The Art of Theater	3			
TERM 2 (Spring)				TOTAL CREDITS 12.5
MUSC 1310 - Concert & Recital Attendance	0.5		S	*Not required
MUSC 1451 - Ear Training II	1		C-	
MUSC 1461 - Music Theory II	3		C-	
MUSC 1471 - Functional Piano (Suggested)*	2*		C-	
MUSC 2510 - Applied Music	1 or 2		C-	
Major Ensemble (2000 level)	1		C-	
ENGL 2210G or ENGL 2221G	3			
AREA IV	3			
Elective if needed				
TERM 3 (Fall)				TOTAL CREDITS 13.5
MUSC 1310 - Concert & Recital Attendance	0.5		S	
MUSC 2310 - Sound & Music Technology	1		C-	
MUSC 2451 - Ear Training III	1		C-	
MUSC 2460 - Music Theory III	3		C-	
MUSC 2510 - Applied Music	1 or 2		C-	
Major Ensemble (2000 level)	1		C-	
Elective if needed				
THEA 1221 - Beginning Acting	3			
COMM 1115	3			
TERM 4 (Spring)				TOTAL CREDITS 16.5
MUSC 1310 - Concert & Recital Attendance	0.5		S	*Not required, but are prerequisites for MUSC 413 and 415
MUSC 2452 - Ear Training IV (Suggested)*	1		C-	
MUSC 2461 - Music Theory IV (Suggested)*	3		C-	Submit program of study form to B.A. Degree Coordinator
MUSC 2510 - Applied Music	1 or 2		C-	
Major Ensemble (300 level)	1		C-	
MUSC 2240 - Hist/Lit Antiquity through Baroque	3		C-	
Area III Course - PHYS 120G - Suggested	4			
THEA 1222 - Stage Movement	3			
Elective if needed				
TERM 5 (Fall)				TOTAL CREDITS 17
MUSC 325 - Beginning Conducting	1		C-	
MUSC 330 - Applied Music	1 or 2		C-	
Major Ensemble (300 level)	1		C-	
300 Level Music Elective	3		C-	
MUSC 302 - Hist/Lit Classic through Romantic	3		C-	
THEA 2421 - Vocal Production for the Actor	3			
DANC 2460 - Dance for Musical Theater I	2			
THEA 317 - Musical Theater	3			
Elective if needed to bring credits to 15				
TERM 6 (Spring)				TOTAL CREDITS 17
300 Level Music Elec.	3		C-	Make appointment with BA Coordinator to discuss Capstone prior to Spring Break
MUSC 330 - Applied Music	1 or 2		C-	
Major Ensemble (300 level)	1		C-	Submit program of study form to B.A. Degree Coordinator by first week of April
MUSC 351 or THEA 356	1		C-	
MUSC 303 - Hist/Lit 20 th Century through Present	3		C-	
AREA III or IV	3 or 4			
THEA 417 - Musical Theater II	3			
VWW Course	3			
TERM 7 (Fall)				TOTAL CREDITS 17
Major Ensemble (300 level - suggested)	1		C-	Schedule appointment with Center for Academic advising to request alternative 9 credit fulfillment of Gen. Ed. Area VI and VII
400 level music elective	3		C-	
MUSC 351 or THEA 356	1		C-	Enroll in MUSC 341 Fall or Spring File CAPSTONE Project Approval Form by the first three weeks of the semester of enrollment If Needed, CAPSTONE Project Change/Update Form must be filed within the first six weeks of the semester of enrollment
VWW Courses	3			
THEA 395 - Directing	3			
AREA V	3			
Upper Division Elective (Theater History Suggested)	3			
TERM 8 (Spring)				TOTAL CREDITS 16
MUSC 341 - BA Capstone	1 or 2		C-	Upper Division Courses- a minimum of 48 credits in courses numbered 300-499/3000-4999.
400 level music elective	3		C-	
VWW Courses	3			Residency - Of the last 36 credits earned toward award of the degree: a. 30 credits must be completed at NMSU b. 21 credits must be upper-division (300/3000 or above) c. 12 of the 21 upper-division credits must be within the major.
Upper Division Elective (Theater History Suggested)	3			
Electives (Upper Division)	6			

Course Subject and Title	Credit Hours	Completed	Minimum Grade	Additional Degree Requirement Notes
Shaded Courses are Major requirements				
TERM 1 (Fall)				TOTAL CREDITS 15.5
MUSC 1310 - Concert & Recital Attendance	0.5		S	
MUSC 1450 - Ear Training I	1		C-	
MUSC 1460 - Music Theory I	3		C-	
MUSC 1470 - Functional Piano	2		C-	
MUSC 2510 - Applied Music	1 or 2		C-	
Major Ensemble (2000 level)	1		C-	
ENGL 1110G - Rhetoric/Composition	4			
MATH 1215 – Intermediate Algebra	3			
TERM 2 (Spring)				TOTAL CREDITS 18.5
MUSC 1310 - Concert & Recital Attendance	0.5		S	
MUSC 1451 - Ear Training II	1		C-	*Not required
MUSC 1461 - Music Theory II	3		C-	
MUSC 1471 - Functional Piano (Suggested)*	2		C-	
MUSC 2510 - Applied Music	1 or 2		C-	
Major Ensemble (2000 level)	1		C-	
SPMD - 2210 & 2210L - Anatomy & Phys I	4			
MATH 1350G – Introduction to Statistics	3			
ENGL 2210G or 2221G	3			
TERM 3 (Fall)				TOTAL CREDITS 16.5
MUSC 1310 - Concert & Recital Attendance	0.5		S	
MUSC 2310 - Sound & Music Technology	1		C-	
MUSC 2451 - Ear Training III	1		C-	
MUSC 2460 - Music Theory III	3		C-	
MUSC 2510 - Applied Music	1 or 2		C-	
Major Ensemble (2000 level)	1		C-	
PSYC 1110 G - Intro to Psyc (Area IV)	3			
COMM 1115 - Intro to Communications	3			
CEPY 1120G – Hum Growth and Behavior**	3			
TERM 4 (Spring)				TOTAL CREDITS 17.5
MUSC 1310 - Concert & Recital Attendance	0.5		S	*Not required, but are prerequisites for MUSC 413 and 415
MUSC 2452 - Ear Training IV (Suggested)*	1		C-	**Strongly Suggested
MUSC 2461 - Music Theory IV (Suggested)*	3		C-	
MUSC 2240 - Hist/Lit Antiquity through Baroque	3		C-	
MUSC 2510 - Applied Music	1 or 2		C-	
MUSC 323 – Percussion Techniques I**	1			
Major Ensemble (300 level)	1		C-	
Area III Course PHYS 120G - Suggested	4			
ENGL 2210G or ENGL 2221G	3			
TERM 5 (Fall)				TOTAL CREDITS 15
MUSC 302 - Hist/Lit Classic through Romantic	3		C-	*Strongly Suggested
MUSC 325 - Beginning Conducting	1		C-	
MUSC 330 - Applied Music	1 or 2		C-	** All degrees must have a minimum of 48 upper division credits, it is essential for this degree track to keep track of this requirement.
Major Ensemble (300 level)	1		C-	
MUSC 322 – Guitar Methods*	1		C-	
300 Level Music Elective	3		C-	
AREA V	3			
Elective (Upper Division)**	2			
TERM 6 (Spring)				TOTAL CREDITS 15
300 Level Music Elective	3		C-	**Suggested Area IV
MUSC 330 - Applied Music	1 or 2		C-	Make appointment with BA Coordinator to discuss Capstone prior to Spring Break
Major Ensemble (300 level)	1		C-	Submit program of study form to B.A. Degree Coordinator by first week of April
MUSC 303 - Hist/Lit 20 th Century through Present	3		C-	
VWW Course	3			
Electives (Upper Division)	4			
TERM 7 (Fall)				TOTAL CREDITS 15
400 level music elective	3		C-	* Schedule appointment with Center for Academic advising to request alternative 9 credit fulfillment of Gen. Ed. Area VI and VII
MUSC 1440 – Vocal Tech for ed (Suggested)	1		C-	
Upper division music electives if needed*	3			Enroll in MUSC 341 Fall or Spring
VWW Courses	3			File CAPSTONE Project Approval Form by the first three weeks of the semester of enrollment
PSYC 2210 – Abnormal Psychology	3			If Needed, CAPSTONE Project Change/Update Form must be filed within the first six weeks of the semester of enrollment
Electives (Upper Division) if needed	2			
TERM 8 (Spring)				TOTAL CREDITS 16
MUSC 341 - BA Capstone	1 or 2		C-	Upper Division Courses- a minimum of 48 credits in courses numbered 300-499/3000-4999.
400 level music elective	3		C-	Residency – Of the last 36 credits earned toward award of the degree:
VWW Courses	3			a. 30 credits must be completed at NMSU
PSYC 2120 – Developmental Psychology	3			b. 21 credits must be upper-division (300/3000 or above)
Electives (Upper Division) if needed	6			c. 12 of the 21 upper-division credits must be within the major.

Course Subject and Title	Credit Hours	Completed	Minimum Grade	Additional Degree Requirement Notes
Shaded Courses are Major requirements				
TERM 1 (Fall)				TOTAL CREDITS 18.5
MUSC 1310 - Concert & Recital Attendance	0.5		S	
MUSC 1450 - Ear Training I	1		C-	
MUSC 1460 - Music Theory I	3		C-	
MUSC 1470 - Functional Piano	2		C-	
MUSC 2510 - Applied Music	1 or 2		C-	
Major Ensemble (2000 level)	1		C-	
ENGL 1110G - Rhetoric/Composition	4			
MATH 1215 - Intermediate Algebra	3			
SPHS 2110 Introduction to Communication Disorders	3			
TERM 2 (Spring)				TOTAL CREDITS 17.5
MUSC 1310 - Concert & Recital Attendance	0.5		S	
MUSC 1451 - Ear Training II	1		C-	*Not required
MUSC 1461 - Music Theory II	3		C-	
MUSC 1471 - Functional Piano (Suggested)*	2		C-	
MUSC 2510 - Applied Music	1 or 2		C-	
Major Ensemble (2000 level)	1		C-	
CEPY 1120G - Human Growth and Behavior (Suggested Area VII)	3			
LING 2110G -Intro to Lang and Ling	3			
ENGL 2210G or ENGL 2221G	3			
TERM 3 (Fall)				TOTAL CREDITS 16.5
MUSC 1310 - Concert & Recital Attendance	0.5		S	
MUSC 2310 - Sound & Music Technology	1		C-	
MUSC 2451 - Ear Training III	1		C-	
MUSC 2460 - Music Theory III	3		C-	
MUSC 2510 - Applied Music	1 or 2		C-	
Major Ensemble (2000 level)	1		C-	
SPHS 4510 (323) - Phonetics	3			
PSYC 1110 G - Intro to Psyc (Area 4)	3			
COMM 1115 - Intro to Communications	3			
TERM 4 (Spring)				TOTAL CREDITS 16.5
MUSC 1310 - Concert & Recital Attendance	0.5		S	*Not required, but are prerequisites for MUSC 413 and 415
MUSC 2452 - Ear Training IV (Suggested)*	1		C-	
MUSC 2461 - Music Theory IV (Suggested)*	3		C-	Submit program of study form to B.A. Degree Coordinator
MUSC 2240 - Hist/Lit Antiquity through Baroque	3		C-	
MUSC 2510 - Applied Music	1 or 2		C-	
Major Ensemble (300 level)	1		C-	
Area III Course PHYS 120G - Suggested	4			
MATH 1350G - Introduction to Statistics	3			
TERM 5 (Fall)				TOTAL CREDITS 17
MUSC 325 - Beginning Conducting	1		C-	*Required as prereq for SPHS 4620
MUSC 330 - Applied Music	1 or 2		C-	
Major Ensemble (300 level)	1		C-	
300 Level Music Elective	3		C-	
MUSC 302 - Hist/Lit Classic through Romantic	3		C-	
AREA V	3			
SPHS 4520- Audiology*	3			
MUS 386 Vocal Ped & Lit (rec)	2			
TERM 6 (Spring)				TOTAL CREDITS 17
300 Level Music Elective (MUSC 303 Suggested)	3		C-	Make appointment with BA Coordinator to discuss
MUSC 330 - Applied Music	1 or 2		C-	Capstone prior to Spring Break
Major Ensemble (300 level)	1		C-	Submit program of study form to B.A. Degree Coordinator
MUSC 303 - Hist/Lit 20 th Century through Present	3		C-	by first week of April
SPHS 4620 - Speech & Hearing Science	3			
SPHS 4610 - Language Acquisition	3			
VWW Course	3			
TERM 7 (Fall)				TOTAL CREDITS 17
Major Ensemble (300 level)	1		C-	Schedule appointment with Center for Academic advising
400 level music elective	3		C-	to request alternative 9 credit fulfillment of Gen. Ed. Area VI and VII
MUSC 1440 - Vocal Tech for Ed (Suggested)	1			
VWW Courses	3			Enroll in MUSC 341 Fall or Spring
Area IV Course	3			File CAPSTONE Project Approval Form by the first three weeks of the semester of enrollment
SPHS 4710-Sp. & Lan. Disorders *	3			If Needed, CAPSTONE Project Change/Update Form must be filed within the first six weeks of the semester of enrollment
SPHS 4720 - Anat and Phys of Spch Mech	3			
TERM 8 (Spring)				TOTAL CREDITS 17-18
MUSC 341 - BA Capstone	1 or 2			Upper Division Courses- a minimum of 48 credits in courses numbered 300-499/3000-4999.
400 level music elective	3			
VWW Courses	3			Residency - Of the last 36 credits earned toward award of the degree:
Area III or IV Course	3-4			a. 30 credits must be completed at NMSU
Electives (Upper Division)	6			b. 21 credits must be upper-division (300/3000 or above)
SPHS 4810(326)-Clinical Methods (rec)				c. 12 of the 21 upper-division credits must be within the major.
SPHS 4820(423)-Neural Bases of Comm (rec)				
SPHS 4830 - rec				

Course Subject and Title Shaded Courses are Major requirements	Credit Hours	Completed	Minimum Grade	Additional Degree Requirement Notes
TERM 1 (Fall)				TOTAL CREDITS 14.5
MUSC 1310 - Concert & Recital Attendance	0.5		S	Functional Piano (MUSC 1470, 1471, 1472, 2470) must be taken until the student passes the Piano Proficiency Exam. String students should enroll for University Orchestra (MUSC 2120), instead of Marching Band (MUSC 2120).
MUSC 1450 - Ear Training I	1		C-	
MUSC 1460 - Music Theory I	3		C-	
MUSC 1440 - Vocal Techniques for Inst Mus Ed	1		C-	
MUSC 2120 - Marching Band	1		C-	
MUSC 2510 - Applied Music	1		C-	
ENGL 1110G - Rhetoric/Composition	4			
MATH 1130G - Survey of Mathematics	3			
TERM 2 (Spring)				TOTAL CREDITS 15.5
MUSC 1310 - Concert & Recital Attendance	0.5		S	Functional Piano (MUSC 1470, 1471, 1472, 2470) must be taken until the student passes the Piano Proficiency Exam.
MUSC 1451 - Ear Training II	1		C-	
MUSC 1461 - Music Theory II	3		C-	
MUSC 2510 - Applied Music	1		C-	
MUSC 1410 - Intro to Music Ed	2		C-	
Instrumental Ensemble (2000 level)	1		C-	
MUSC 2310 - Sound & Music Technology	1		C-	
ENGL 2210G or ENGL 2221G	3			
AREA III or IV Course (3 or 4)	3 or 4			
TERM 3 (Fall)				TOTAL CREDITS 17.5
MUSC 1310 - Concert & Recital Attendance	0.5		S	Functional Piano (MUSC 1470, 1471, 1472, 2470) must be taken until the student passes the Piano Proficiency Exam. String students should enroll for University Orchestra (MUSC 2120), instead of Marching Band (MUSC 2120).
MUSC 2451 - Ear Training III	1		C-	
MUSC 2460 - Music Theory III	3		C-	
MUSC 2510 - Applied Music	1		C-	
MUSC 372 - Marching Band II	1		C-	
Instrumental Tech	1		C-	
Instrumental Tech	1		C-	
CEPY 2110 - Learning in the Classroom	3			
Area IV	3			
COMM 1115G - Intro to Communication	3			
TERM 4 (Spring)				TOTAL CREDITS 18.5
MUSC 1310 - Concert & Recital Attendance	0.5		S	Functional Piano (MUSC 1470, 1471, 1472, 2470) must be taken until the student passes the Piano Proficiency Exam. Should apply for TEP in the 5 th week of the semester, Should take and pass the Music TEP exam by the end of this semester.
MUSC 2452 - Ear Training IV	1		C-	
MUSC 2461 - Music Theory IV	3		C-	
MUSC 2240 - Hist/Lit Antiquity through Baroque	3		C-	
MUSC 2510 - Applied Music	1		C-	
Instrumental Tech	1		C-	
Instrumental Tech	1		C-	
Instrumental Ensemble (2000 level)	1		C-	
Area III Course PHYS 1125G - Suggested	4			
AREA V Humanities	3			
TERM 5 (Fall)				TOTAL CREDITS 15.5
MUSC 1310 - Concert & Recital Attendance	0.5		S	Student must pass Applied Proficiency exam before enrolling in MUSC 330. Student must submit STEP Packet to College of Education and apply to Student Teach.
MUSC 325 - Beginning Conducting	1		C-	
MUSC 330 - Applied Music	1		C-	
MUSC 346 - Elem. Music Methods	2		C-	
MUSC 413 - Form and Analysis	3		C-	
Instrumental Tech	1		C-	
Instrumental Ensemble (300 level)	1		C-	
MUSC 302 - Hist/Lit Classic through Romantic	3		C-	
SPED 3105 - Intro to Special Education	3			
TERM 6 (Spring)				TOTAL CREDITS 15.5
MUSC 1310 - Concert & Recital Attendance	0.5		S	Student must pass Applied Proficiency exam before enrolling in MUSC 430.
MUSC 326 - Instrumental Conducting	3		C-	
MUSC 430 - Applied Music	2		C-	
MUSC 393 - Intr. Strat for Inst I	2		C-	
MUSC 415 - Orchestration	3		C-	
Instrumental Tech	1		C-	
Instrumental Ensemble (300 level)	1		C-	
MUSC 303 - Hist/Lit 20th Cent through Present	3		C-	
TERM 7 (Fall)				TOTAL CREDITS 14.5
MUSC 1310 - Concert & Recital Attendance	0.5		S	Student must pass Piano Proficiency exam before being allowed to perform a Senior Recital. Student should register for and take the NMTA Music Content Exam. Student must attend the Student Teacher Orientation with the College of Education. Schedule appointment with Center for Academic advising to request alternative 9 credit fulfillment of Gen. Ed. Area VI and VII
MUSC 2130 - Jazz Ensemble	1		C-	
MUSC 397 - Administrative Music Methods	1		C-	
MUSC 394 - Intr. Strat for Inst II	2		C-	
MUSC 430 - Applied Music	2		C-	
MUSC 440 - Senior Recital	1		C-	
Instrumental Tech (suggested)	1		C-	
Read 4330 - Content Area Literacy	3			
VWW Course	3			
TERM 8 (Spring)				
EDUC 471 - Secondary Student Teaching	9		C-	Student must register for and take the NMTA Teacher Competency Exam.
EDUC 482 - Student Teaching Seminar	3		C-	

Course Subject and Title Shaded Courses are Major requirements	Credit Hours	Completed	Minimum Grade	Additional Degree Requirement Notes
TERM 1 (Fall)				TOTAL CREDITS 16.5
MUSC 1310 - Concert & Recital Attendance	0.5		S	*Functional Piano (MUSC 1470, 1471, 1472, 2470) must be taken until the student passes the Piano Proficiency Exam. Instrumental Performance Majors must have 4 credits of Functional Piano or Applied Piano
MUSC 1450 - Ear Training I	1		C-	
MUSC 1460 - Music Theory I	3		C-	
MUSC 1470 - Functional Piano *	2		C-	
MUSC 2510 - Applied Music	2		C-	
Instrumental Ensemble (2000 level)	1		C-	
ENGL 1110G - Rhetoric/Composition	4			
MATH 1130G - Math Appreciation	3			
TERM 2 (Spring)				TOTAL CREDITS 13.5
MUSC 1310 - Concert & Recital Attendance	0.5		S	*Functional Piano (MUSC 1470, 1471, 1472, 2470) must be taken until the student passes the Piano Proficiency Exam.
MUSC 1451 - Ear Training II	1		C-	
MUSC 1461 - Music Theory II	3		C-	
MUSC 1471 - Functional Piano *	2		C-	
MUSC 2510 - Applied Music	2		C-	
MUSC 2310 - Sound & Music Technology	1		C-	
Instrumental Ensemble (2000 level)	1		C-	
ENGL 2210G or ENGL 2221G	3			
TERM 3 (Fall)				TOTAL CREDITS 15.5
MUSC 1310 - Concert & Recital Attendance	0.5		S	Functional Piano (MUSC 1470, 1471, 1472, 2470) must be taken until the student passes the Piano Proficiency Exam.
MUSC 2451 - Ear Training III	1		C-	
MUSC 2460 - Music Theory III	3		C-	*Not required with successful completion of the Piano Proficiency Exam
MUSC 2510 - Applied Music	2		C-	
Functional Piano III*	2			
Instrumental Ensemble (300 level)	1		C-	
COMM 1115G	3			
AREA V	3			
TERM 4 (Spring)				TOTAL CREDITS 16.5
MUSC 1310 - Concert & Recital Attendance	0.5		S	Functional Piano (MUSC 1470, 1471, 1472, 2470) must be taken until the student passes the Piano Proficiency Exam.
MUSC 2452 - Ear Training IV	1		C-	
MUSC 2461 - Music Theory IV	3		C-	*Not required with successful completion of the Piano Proficiency Exam
MUSC 2240 - Hist/Lit Antiquity through Baroque	3		C-	
MUSC 2510 - Applied Music	2		C-	
Functional Piano IV*	2		C-	
Instrumental Ensemble (300 level)	1		C-	
Area III Course - PHYS 120G - Suggested	4			
TERM 5 (Fall)				TOTAL CREDITS 14.5
MUSC 1310 - Concert & Recital Attendance	0.5		S	Student must pass Applied Proficiency exam before enrolling in MUSC 330.
MUSC 302 - Hist/Lit Classic through Romantic	3		C-	
MUSC 325 - Beginning Conducting	1		C-	
MUSC 386 - Applied Pedagogy and Literature	2		C-	
MUSC 330 - Applied Music	3		C-	
Instrumental Ensemble (x2) (300 level)	2		C-	
AREA IV	3			
TERM 6 (Spring)				TOTAL CREDITS 15.5
MUSC 1310 - Concert & Recital Attendance	0.5		S	
MUSC 326 - Instrumental Conducting	3		C-	
MUSC 330 - Applied Music	3		C-	
MUSC 340 - Junior Recital	1		C-	
Instrumental Ensemble (x2) (300 level)	2		C-	
MUSC 303 - Hist/Lit 20th Cent through Present	3		C-	
AREA III or IV (3 or 4)	3 or 4			
TERM 7 (Fall)				TOTAL CREDITS 16.5
MUSC 1310 - Concert & Recital Attendance	0.5		S	Student must pass Applied Proficiency exam before enrolling in MUSC 430
MUSC 413 - Form and Analysis	3		C-	
MUSC 430 - Applied Music	3		C-	Schedule appointment with Center for Academic advising to request alternative 9 credit fulfillment of Gen. Ed. Area VI and VII
MUSC 441 - Supervised Studio Teaching	2		C-	
Music History Elective (400 level)	3		C-	
Instrumental Ensemble (x2) (300 level)	2		C-	
VVV Courses	3			
TERM 8 (Spring)				TOTAL CREDITS 16.5
MUSC 1310 - Concert & Recital Attendance	0.5		S	Student must pass Piano Proficiency exam before enrolling in MUSC 440
MUSC 415 - Orchestration	3		C-	
MUSC 430 - Applied Music	3		C-	
MUSC 440 - Senior Recital	2		C-	
Instrumental Ensemble (x2) (300 level)	2		C-	
Music History Elective (400 level)	3		C-	
VVV Courses	3			

Course Subject and Title <small>Shaded Courses are Major requirements</small>	Credit Hours	Completed	Minimum Grade	Additional Degree Requirement Notes
TERM 1 (Fall)				TOTAL CREDITS 16.5
MUSC 1310 - Concert & Recital Attendance	0.5		S	Enrollment in MUSC 1450 & 1460 is contingent on passing MUSC 1210 with a C or better.
MUSC 1450 - Ear Training I	1		C-	
MUSC 1460 - Music Theory I	3		C-	
MUSC 2510 - Applied Music	2		C-	
Secondary Applied	2		C-	
Ensemble (2000 level)	1		C-	
ENGL 1110G - Rhetoric/Composition	4			
MATH 1130G - Survey of Mathematics	3			
TERM 2 (Spring)				TOTAL CREDITS 16.5
MUSC 1310 - Concert & Recital Attendance	0.5		S	See Music Degree plans in Music Student Handbook for General Education requirements/options.
MUSC 1451 - Ear Training II	1		C-	
MUSC 1461 - Music Theory II	3		C-	
MUSC 2510 - Applied Music	2		C-	
MUSC 2310 - Sound & Music Technology	1		C-	
Secondary Applied	2		C-	
Ensemble (2000 level)	1		C-	
ENGL 2210G	3			
AREA III or IV (3 or 4)	3-4			
TERM 3 (Fall)				TOTAL CREDITS 16.5
MUSC 1310 - Concert & Recital Attendance	0.5		S	See Music Degree plans in Music Student Handbook for General Education requirements/options.
MUSC 2451 - Ear Training III	1		C-	
MUSC 2460 - Music Theory III	3		C-	
MUSC 2510 - Applied Music	2		C-	
Ensemble (300 level)	1		C-	
COMM 115G - Intro to Communication	3			
AREA IV	3			
Elective if needed	3			
TERM 4 (Spring)				TOTAL CREDITS 17.5
MUSC 1310 - Concert & Recital Attendance	0.5		S	See Music Degree plans in Music Student Handbook for General Education requirements/options.
MUSC 2452 - Ear Training IV	1		C-	
MUSC 2461 - Music Theory IV	3		C-	
MUSC 2240 - Hist/Lit Antiquity through Baroque	3		C-	
MUSC 2510 - Applied Music	2		C-	
Ensemble (300 level)	1		C-	
Area III Course - PHYS 120G - Suggested	4			
AREA V	3			
TERM 5 (Fall)				TOTAL CREDITS 13.5
MUSC 1310 - Concert & Recital Attendance	0.5		S	Student must pass Applied Proficiency exam before enrolling in MUSC 330. See Music Degree plans in Music Student Handbook for General Education requirements/options.
MUSC 325 - Beginning Conducting	1		C-	
MUSC 386 - Applied Pedagogy and Literature	2		C-	
MUSC 330 - Applied Music	3		C-	
MUSC 2110 - Chamber Ensemble	1		C-	
MUSC 302 - Hist/Lit Classic through Romantic	3		C-	
VWW Course	3			
TERM 6 (Spring)				TOTAL CREDITS 15.5
MUSC 1310 - Concert & Recital Attendance	0.5		S	See Music Degree plans in Music Student Handbook for General Education requirements/options.
Music History Elective (400 level)	3		C-	
MUSC 330 - Applied Music	3		C-	
MUSC 340 - Junior Recital	1		C-	
MUSC 2110 - Chamber Ensemble	1		C-	
MUSC 441 - Supervised Studio Teaching	2		C-	
Music Elective (upper level)	2		C-	
MUSC 303 - Hist/Lit 20th Cent through Present	3		C-	
TERM 7 (Fall)				TOTAL CREDITS 14.5
MUSC 1310 - Concert & Recital Attendance	0.5		S	Student must pass Applied Proficiency exam before enrolling in MUSC 430. See Music Degree plans in Music Student Handbook for General Education requirements/options.
MUSC 413 - Form and Analysis	3		C-	
MUSC 430 - Applied Music	3		C-	
MUSC 486 - Applied Pedagogy and Literature	2		C-	
MUSC 350 - Chamber Music Ensemble	1		C-	
MUSC 417 - Studio Accompanying	2		C-	
VWW Course	3			
TERM 8 (Spring)				TOTAL CREDITS 13.5
MUSC 1310 - Concert & Recital Attendance	0.5		S	Student must pass Secondary Proficiency exam before enrolling in MUSC 440.
MUSC 417 - Studio Accompanying	2		C-	
MUSC 430 - Applied Music	3		C-	Schedule appointment with Center for Academic advising to request alternative 9 credit fulfillment of Gen. Ed. Area VI and VII
MUSC 440 - Senior Recital	2		C-	
MUSC 350 - Chamber Music Ensemble	1		C-	
Music History Elective (400 level)	3		C-	
Music Elective (upper level)	2		C-	
				Degree Completion Total Credits 124

Course Subject and Title Shaded Courses are Major requirements	Credit Hours	Completed	Minimum Grade	Additional Degree Requirement Notes
TERM 1 (Fall)				TOTAL CREDITS 14.5
MUSC 1310 - Concert & Recital Attendance	0.5		S	Functional Piano (MUSC 1470, 1471, 1472, 2470) must be taken until the student passes the Piano Proficiency Exam.
MUSC 1450 - Ear Training I	1		C-	
MUSC 1460 - Music Theory I	3		C-	
Choral Ensemble (2000 level)	1		C-	
MUSC 2510 - Applied Music	2		C-	
ENGL 1110G - Rhetoric/Composition	4			
MATH 1130G - Survey of Mathematics	3			
TERM 2 (Spring)				15.5
MUSC 1310 - Concert & Recital Attendance	0.5		S	Functional Piano (MUSC 1470, 1471, 1472, 2470) must be taken until the student passes the Piano Proficiency Exam.
MUSC 1451 - Ear Training II	1		C-	
MUSC 1461 - Music Theory II	3		C-	
MUSC 2510 - Applied Music	1 or 2		C-	
MUSC 1410 - Intro to Music Ed	2		C-	
MUSC 2310 - Sound & Music Technology	1		C-	
Choral Ensemble (2000 level)	1		C-	
AREA IV	3			
ENGL 2210G or ENGL 2221G	3			
TERM 3 (Fall)				TOTAL CREDITS 17.5
MUSC 1310 - Concert & Recital Attendance	0.5		S	Functional Piano (MUSC 1470, 1471, 1472, 2470) must be taken until the student passes the Piano Proficiency Exam.
MUSC 2451 - Ear Training III	1		C-	
MUSC 2460 - Music Theory III	3		C-	
MUSC 2510 - Applied Music	1 or 2		C-	
MUSC 2210 - Diction I (odd acad. yr. only)	2		C-	
Choral Ensemble (300 level)	1		C-	
Humanities Area V	3			
CEPY 2110 - Learning in the Classroom	3			
COMM 1115G - Intro to Communication	3			
TERM 4 (Spring)				TOTAL CREDITS 15.5
MUSC 1310 - Concert & Recital Attendance	0.5		S	Functional Piano (MUSC 1470, 1471, 1472, 2470) must be taken until the student passes the Piano Proficiency Exam. Should apply for TEP in the 5 th week of the semester, should take and pass the Music TEP exam by the end of this semester.
MUSC 2452 - Ear Training IV	1		C-	
MUSC 2461 - Music Theory IV	3		C-	
MUSC 2240 - Hist/Lit Antiquity through Baroque	3		C-	
MUSC 2510 - Applied Music	1 or 2		C-	
MUSC 2220 Diction II (odd acad. yr. only)	2		C-	
Choral Ensemble (300 level)	1		C-	
Area III Course - PHYS 120G - Suggested	4			
TERM 5 (Fall)				TOTAL CREDITS 18.5
MUSC 1310 - Concert & Recital Attendance	0.5		S	Student must pass Applied Proficiency exam before enrolling in MUSC 330. Student must submit STEP Packet to College of Education and apply to Student Teach.
MUSC 325 - Beginning Conducting	1		C-	
MUSC 330 - Applied Music	1 or 2		C-	
MUSC 302 - Hist/Lit Classic through Romantic	3		C-	
MUSC 346 - Elem. Music Methods	2		C-	
MUSC 413 - Form and Analysis	3		C-	
Choral Ensemble (300 level)	1		C-	
MUSC 321 - Inst Tech for Vocal (even acad. yr. only)	2		C-	
MUSC 386 - Ped & Lit I (even acad. yr. only)	2		C-	
SPED 33105 - Intro to Special Education	3			
TERM 6 (Spring)				TOTAL CREDITS 17.5
MUSC 1310 - Concert & Recital Attendance	0.5		S	Student must pass Applied Proficiency exam before enrolling in MUSC 430.
MUSC 303 - Hist/Lit 20th Cent through Present	3		C-	
MUSC 327 - Choral Conducting	3		C-	
MUSC 430 - Applied Music	2		C-	
MUSC 395 - Instr. Strat. for Voice I	2		C-	
MUSC 415 - Orchestration	3		C-	
Choral Ensemble (300 level)	1		C-	
AREA III or AREA IV (3 or 4)	3-4			
TERM 7 (Fall)				TOTAL CREDITS 13.5
MUSC 1310 - Concert & Recital Attendance	0.5		S	Student must pass Piano Proficiency exam before being allowed to perform a Senior Recital. Student should register for and take the NMTA Music Content Exam. Student must attend the Student Teacher Orientation with the College of Education. Schedule appointment with Center for Academic advising to request alternative 9 credit fulfillment of Gen. Ed. Area VI and VII
MUSC 397 - Administrative Methods	1		C-	
MUSC 396 - Instr. Strat. for Voice II	2		C-	
MUSC 430 - Applied Music	2		C-	
MUSC 440 - Senior Recital	1		C-	
Choral Ensemble (300 level)	1		C-	
MUSC 322-Guitar Tech. (Suggested)	1			
READ 4330 - Content Area Literacy	3			
VWW	3			
TERM 8 (Spring)				TOTAL CREDITS 12
EDUC 4820 - Secondary Student Teaching	9		C-	Student must register for and take the NMTA Teacher Competency Exam.
EDUC 4821 - Student Teaching Seminar	3		C-	
Degree Completion Total Credits 124.5				

Course Subject and Title Shaded Courses are Major requirements	Credit Hours	Completed	Minimum Grade	Additional Degree Requirement Notes
TERM 1 (Fall)				TOTAL CREDITS 16.5
MUSC 1310 - Concert & Recital Attendance	0.5		S	Functional Piano (MUSC 1470, 1471, 1472, 2470) must be taken until the student passes the Piano Proficiency Exam. Choral ensemble must be MUSC 2120 or Concert Choir 2120.
MUSC 1450 - Ear Training I	1		C-	
MUSC 1460 - Music Theory I	3		C-	
MUSC 2510 - Applied Music	2		C-	
Choral Ensemble (2000 level)	1		C-	
MUSC 1470 – Functional Piano I	2		C-	
ENGL 1110G - Rhetoric/Composition	4			
MATH 1130G - Survey of Mathematics	3			
TERM 2 (Spring)				TOTAL CREDITS 16.5
MUSC 1310 - Concert & Recital Attendance	0.5		S	Functional Piano (MUSC 1470, 1471, 1472, 2470) must be taken until the student passes the Piano Proficiency Exam. Choral ensemble must be MUSC 2120 or Concert Choir 2120.
MUSC 1451 - Ear Training II	1		C-	
MUSC 1461 - Music Theory II	3		C-	
MUSC 2510 - Applied Music	2		C-	
MUSC 2310 - Sound & Music Technology	1		C-	
MUSC 1471 – Functional Piano II	2		C-	
Choral Ensemble (2000 level)	1		C-	
COMM 1115G - Intro to Communication	3			
ENGL 2221G or ENGL 2210G	3			
TERM 3 (Fall)				TOTAL CREDITS 16.5
MUSC 1310 - Concert & Recital Attendance	0.5		S	Functional Piano (MUSC 1470, 1471, 1472, 2470) must be taken until the student passes the Piano Proficiency Exam. Choral ensemble must be MUSC 361 or Concert Choir 368.
MUSC 2451 - Ear Training III	1		C-	
MUSC 2460 - Music Theory III	3		C-	
MUSC 2510 - Applied Music	2		C-	
MUSC 2210 - Diction I (odd acad. year only)	2		C-	
Choral Ensemble (300 level)	1		C-	
MUS 2993 - Opera Workshop	1		C-	
MUSC 1472 – Functional Piano III*	2			
AREA III or IV (3 or 4)	3-4			
TERM 4 (Spring)				TOTAL CREDITS 15.5
MUSC 1310 - Concert & Recital Attendance	0.5		S	Functional Piano (MUSC 1470, 1471, 1472, 2470) must be taken until the student passes the Piano Proficiency Exam. Choral ensemble must be MUSC 361 or Concert Choir 368.
MUSC 2452 - Ear Training IV	1		C-	
MUSC 2461 - Music Theory IV	3		C-	
MUSC 2240 - Hist/Lit Antiquity through Baroque	3		C-	
MUSC 2510 - Applied Music	2		C-	
Choral Ensemble (300 level)	1		C-	
MUSC 2993 - Opera Workshop	1		C-	
MUSC 2470 – Functional Piano IV*	2			
MUSC 2220 - Diction II (odd acad. Year only)	2		C-	
TERM 5 (Fall)				TOTAL CREDITS 17.5
MUSC 1310 - Concert & Recital Attendance	0.5		S	Student must pass Applied Proficiency exam before enrolling in MUSC 330. Choral ensemble must be MUSC 361 or 368.
MUSC 302 - Hist/Lit Classic through Romantic	3		C-	
MUSC 325 - Beginning Conducting	1		C-	
MUSC 386 - Applied Pedagogy and Literature	2		C-	
MUSC 330 - Applied Music	3		C-	
Choral Ensemble (300 level)	1		C-	
MUSC 351 - Opera Workshop	1		C-	
MUSC 429 - Opera and Music Drama (even yr)	3		C-	
Area V	3			
TERM 6 (Spring)				TOTAL CREDITS 17.5
MUSC 1310 - Concert & Recital Attendance	0.5		S	Choral ensemble must be MUSC 361 or 368.
MUSC 303 - Hist/Lit 20th Cent through Present	3		C-	
MUSC 330 - Applied Music	3		C-	
MUSC 340 - Junior Recital	1		C-	
Choral Ensemble (300 level)	1		C-	
MUSC 351 - Opera Workshop	1		C-	
GRMN 1110 - Elementary German I	4			
Area III Course - PHYS 120G - Suggested	4			
TERM 7 (Fall)				TOTAL CREDITS 16.5
MUSC 1310 - Concert & Recital Attendance	0.5		S	Student must pass Applied Proficiency exam before enrolling in MUSC 430.
MUSC 413 - Form and Analysis	3		C-	
MUSC 430 - Applied Music	3		C-	Schedule appointment with Center for Academic advising to request alternative 9 credit fulfillment of Gen. Ed. Area VI and Area VII
MUSC 486 – Applied Ped & Lit.	2		C-	
MUSC 351 - Opera Workshop	1		C-	
AREA IV	3			
FREN 1110 - Elementary French I	4			
TERM 8 (Spring)				TOTAL CREDITS 15.5
MUSC 1310 - Concert & Recital Attendance	0.5		S	Student must pass Piano Proficiency exam before being allowed to perform a Senior Recital.
MUSC 415 - Orchestration	3		C-	
MUSC 430 - Applied Music	3		C-	
MUSC 440 - Senior Recital	2		C-	
MUSC 351 - Opera Workshop	1		C-	
VWW Course	3			
VWW Course	3			

Course Subject and Title <i>Shaded Courses are Major requirements</i>	Credit Hours	Completed	Minimum Grade	Additional Degree Requirement Notes
TERM 1 (Fall)				TOTAL CREDITS 14.5
MUSC 1310 - Concert & Recital Attendance	0.5		S	Functional Piano (MUSC 1470, 1471, 1472, 2470) must be taken until the student passes the Piano Proficiency Exam.
MUSC 1450 - Ear Training I	1		C-	
MUSC 1460 - Music Theory I	3		C-	
Choral Ensemble (2000 level)	1		C-	
MUSC 2510 - Applied Music	2		C-	
ENGL 1110G - Rhetoric/Composition	4			
MATH 1130G - Survey of Mathematics	3			
TERM 2 (Spring)				15.5
MUSC 1310 - Concert & Recital Attendance	0.5		S	Functional Piano (MUSC 1470, 1471, 1472, 2470) must be taken until the student passes the Piano Proficiency Exam.
MUSC 1451 - Ear Training II	1		C-	
MUSC 1461 - Music Theory II	3		C-	
MUSC 2510 - Applied Music	1 or 2		C-	
MUSC 1410 - Intro to Music Ed	2		C-	
MUSC 2310 - Sound & Music Technology	1		C-	
Choral Ensemble (2000 level)	1		C-	
AREA IV	3			
ENGL 2210G or ENGL 2221G	3			
TERM 3 (Fall)				TOTAL CREDITS 17.5
MUSC 1310 - Concert & Recital Attendance	0.5		S	Functional Piano (MUSC 1470, 1471, 1472, 2470) must be taken until the student passes the Piano Proficiency Exam.
MUSC 2451 - Ear Training III	1		C-	
MUSC 2460- Music Theory III	3		C-	
MUSC 2510 - Applied Music	1 or 2		C-	
MUSC 2210 – Diction I (odd acad. yr. only)	2		C-	
Choral Ensemble (300 level)	1		C-	
Humanities Area V	3			
CEPY 2110 – Learning in the Classroom	3			
COMM 1115G - Intro to Communication	3			
TERM 4 (Spring)				TOTAL CREDITS 15.5
MUSC 1310 - Concert & Recital Attendance	0.5		S	Functional Piano (MUSC 1470, 1471, 1472, 2470) must be taken until the student passes the Piano Proficiency Exam. Should apply for TEP in the 5 th week of the semester, should take and pass the Music TEP exam by the end of this semester.
MUSC 2452 - Ear Training IV	1		C-	
MUSC 2461 - Music Theory IV	3		C-	
MUSC 2240 - Hist/Lit Antiquity through Baroque	3		C-	
MUSC 2510 - Applied Music	1 or 2		C-	
MUSC 2220 Diction II (odd acad. yr. only)	2		C-	
Choral Ensemble (300 level)	1		C-	
Area III Course - PHYS 120G - Suggested	4			
TERM 5 (Fall)				TOTAL CREDITS 18.5
MUSC 1310 - Concert & Recital Attendance	0.5		S	Student must pass Applied Proficiency exam before enrolling in MUSC 330. Student must submit STEP Packet to College of Education and apply to Student Teach.
MUSC 325 - Beginning Conducting	1		C-	
MUSC 330 - Applied Music	1 or 2		C-	
MUSC 302 - Hist/Lit Classic through Romantic	3		C-	
MUSC 346 - Elem. Music Methods	2		C-	
MUSC 413 - Form and Analysis	3		C-	
Choral Ensemble (300 level)	1		C-	
MUSC 321 – Inst Tech for Vocal (even acad. yr. only)	2		C-	
MUSC 386 – Ped & Lit I (even acad. yr. only)	2		C-	
SPED 33105 - Intro to Special Education	3			
TERM 6 (Spring)				TOTAL CREDITS 17.5
MUSC 1310 - Concert & Recital Attendance	0.5		S	Student must pass Applied Proficiency exam before enrolling in MUSC 430.
MUSC 303 - Hist/Lit 20th Cent through Present	3		C-	
MUSC 327 - Choral Conducting	3		C-	
MUSC 430 - Applied Music	2		C-	
MUSC 395 – Instr. Strat. for Voice I	2		C-	
MUSC 415 - Orchestration	3		C-	
Choral Ensemble (300 level)	1		C-	
AREA III or AREA IV (3 or 4)	3-4			
TERM 7 (Fall)				TOTAL CREDITS 13.5
MUSC 1310 - Concert & Recital Attendance	0.5		S	Student must pass Piano Proficiency exam before being allowed to perform a Senior Recital. Student should register for and take the NMTA Music Content Exam. Student must attend the Student Teacher Orientation with the College of Education. Schedule appointment with Center for Academic advising to request alternative 9 credit fulfillment of Gen. Ed. Area VI and VII
MUSC 397 – Administrative Methods	1		C-	
MUSC 396 – Instr. Strat. for Voice II	2		C-	
MUSC 430 - Applied Music	2		C-	
MUSC 440 - Senior Recital	1		C-	
Choral Ensemble (300 level)	1		C-	
MUSC 322-Guitar Tech. (Suggested)	1			
READ 4330 - Content Area Literacy	3			
VWW	3			
TERM 8 (Spring)				
EDUC 4820 - Secondary Student Teaching	9		C-	Student must register for and take the NMTA Teacher Competency Exam.
EDUC 4821 - Student Teaching Seminar	3		C-	
Degree Completion Total Credits 124.5				

COURSE OFFERINGS AND ROTATION

FALL	SPRING
1110G – Music Appreciation: Jazz 1130G – Western Music 1450 – Ear Training I 1460 – Music Theory I 1210 – Fundamentals of Music 1310 – Concert/Recital Lab 1992 – Applied Music 1440 – Class Voice 1470 – Functional Piano I 1472 – Functional Piano III 2120/362 – University Orchestra 2120/368 – University Singers 2120/361 – Concert Choir 2110 – Masterworks Chorus 2130/363 – Jazz Ensemble 2110 – Chamber Ensemble 2120/370 – Wind Symphony 2740/372 – Marching Band 2120/380 – Symphonic Band 2451 – Ear Training III 2460 – Theory III 2510 – Applied Music 2993/351 - Opera Workshop/Lyric Theater 2310 – Sound & Music Technology 302 – Music History and Literature: Classic through Romantic 316 – Brass Techniques II 317 – Woodwind Techniques I 319 – String Techniques I and II 325 – Beginning Conducting 326 – Inst Cond 330 – Applied Music II 340 – Junior Recital 341 – BA Capstone 346 – Elementary Music Methods 350 – Chamber Music 393 – Instructional Strategies I (Instrumental) 394 – Instructional Strategies II (Instrumental) 396 – Instructional Strategies II (Vocal) 413 – Form and Analysis 430 – Applied Music III 440 – Senior Recital 471 – Graduate Theory Review 475 – Intermediate Conducting 477 – Graduate History Review 511 – Survey Trdnl Harmony 540 – Graduate Analytical Paper 574/576 – Advanced Conducting I 575/577 – Advanced Conducting II 579 – Adv Instr Lit 580 – Ensemble Performance 582 – Applied Music	1110G – Music Appreciation: Jazz 1130G – Western Music 1451 – Ear Training II 1461 – Music Theory II 1210 – Fundamentals of Music 1310 – Concert/Recital Lab 1992 – Applied Music 1471 – Functional Piano II 2120/362 – University Orchestra 2120/368 – University Singers 2120/361 – Concert Choir 2110 – Masterworks Chorus 2130/363 – Jazz Ensemble 2110 – Chamber Ensemble 2120/370 – Wind Symphony 2110/350 – Roadrunner Revue Pep Band 2132/374 – Percussion Ensemble 2120/380 – Symphonic Band 2452 – Ear Training IV 2461 – Music Theory IV 2240 – Music History & Literature: Antiquity through Baroque 2510 – Applied Music 1410 – Introduction to Music Education 2993/351 – Opera Workshop 2470 – Functional Piano IV 303 – Music History & Literature: 20 th Century through Present 315 – Brass Techniques I 318 – Woodwind Techniques II 322 – Guitar Methods 323 – Percussion Tech. I/ 324 – Percussion Tech. II 326 – Instrumental Conducting 327 – Choral Conducting 330 – Applied Music II 340 – Junior Recital 341 – BA Capstone 350 – Chamber Music 393 – Instructional Strategies I (Instrumental) 394 – Instructional Strategies II (Instrumental) 395 – Instructional Strategies I (Vocal) 397 – Administrative Music Methods 415 – Orchestration 417 – Studio Accompanying 422 – Music of the Classic Era 424 – Music of the Twentieth Century 430 – Applied Music III 440 – Senior Recital 450 – Research Methods 475 – Intermediate Conducting 531 – Music Education in the Diverse Classroom 540 – Graduate Analytical Paper 574/576 – Advanced Conducting I 575/577 – Advanced Conducting II 580 – Ensemble Performance 582 – Applied Music
FALL Even Years 301 – Marching Band Techniques 321 – Inst Tech for Vocal Music Ed Majors Vocal Ped & Lit I (386) 529/429 – Opera Hist & Lit	SPRING Odd Years Vocal Ped & Lit II (486) 513/424 – Twentieth Century Art Music (Theory or History) 522/422 – Music of the Classical Era (History)
FALL Odd YEAR 2210 – Diction I 523/470 – Music of the Romantic Era	SPRING Even YEAR 2220 – Diction II 518/470 – Seminar in Music Theory (Historical and Theoretical Performance Analysis) 421/521 – Baroque Hist. and Lit.
SUMMER I 535 – Current Issues in Music Education 1110G – Music Appreciation: Jazz	SUMMER II 530 – Seminar in Music Ed 1130G – Western Music
OFFERED AS NEEDED 598 – Special Research Programs 599 – Master's Thesis 365 – Composition I 360 – Special Topics II	OFFERED AS NEEDED 386/486/586 – Applied Ped. & Lit. I/II/III 441 – Supervised Studio Teaching 390 – Survey Wind Lit 391 – Survey Orchestra Lit 392 – Survey Choral Lit

DEPARTMENT HEAD	OFFICE	EXT	PHONE	EMAIL
------------------------	---------------	------------	--------------	--------------

Bugbee, Fred – Dept. Head	101C	6-2901		frbugbee@nmsu.edu
---------------------------	------	--------	--	-------------------

FACULTY

Arahata, Yoshiko – Collab Piano/Theory	211B	6-1290		varahata@nmsu.edu
Ausdemore, Jeffery – Percussion	120	6-2421		jaus@nmsu.edu
Bugbee, Fred – Percussion	101C	6-2901		frbugbee@nmsu.edu
Dalager, Jacob – Trumpet/Jazz	211A	6-5341		jdalager@nmsu.edu
Daughtrey, Sarah – Voice/Diction	203	6-4879		sdaughtr@nmsu.edu
Espinoza, Jorge – Cello/Bass/String Tech	209	6-3932		jorgevcl@nmsu.edu
Gunnarson, Eike – Voice/Piano	LPR	6-2421		egunnars@nmsu.edu
Hallsted, Paul – MUSC 346		6-2421		phallste@nmsu.edu
Kaplan, Allan – Low Brass	116	6-3114		akaplan@nmsu.edu
Lee, Jeff – MUSC 2310	101B	6-4877		jslee@nmsu.edu
Mapp, Michael – Dir of Bands/Conducting	112	6-3319		mikemapp@nmsu.edu
Martinez-Rios, Jorge – Viola/Orchestra	206	6-1647		jovmar@nmsu.edu
Moore, Madelyn -Clarinet	123	6-3735		mmoore82@nmsu.edu
Neely, Sarah – Voice/Opera WS	205	6-5680		neely@nmsu.edu
Plominska, Marta – Flute/Ear Training	114	6-2523		mplomin@nmsu.edu
Reyes, Stephanie – Dir of Choral Studies	106	6-1306		slreyes@nmsu.edu
Shearer, Jim – Graduate Coordinator	121	6-2601		jshearer@nmsu.edu
Smyth, Steven – Assoc Dir of Bands/Mus Ed	119	6-1986		ssmyth@nmsu.edu
Spitzer, Laura – Piano	211	6-2228		lspitzer@nmsu.edu
Taylor, Rhonda – Saxophone/Theory	122	6-3003		rhondat@nmsu.edu
Vega-Albela, Daniel – Violin	208	6-5432		lcsq1@nmsu.edu
Winter, Angela – Horn/Music Ed	113	6-1390		akwinter@nmsu.edu

GRADUATE ASSISTANTS

Gonzalez, Adrian	118	6-1987		adriangp@nmsu.edu
Pendergrass, Dalton	234	6-2304		drpen99@nmsu.edu
Pinkham, Benjamin	118	6-1987		pinkbenj@nmsu.edu
Ramirez Miguel, Heriberto	207	6-2724		herami@nmsu.edu

ADMINISTRATIVE

Crollett, Rena – Music Assistant	101	6-2421		crollett@nmsu.edu
Pior, Trista – Band Assistant	115	6-2304		rplc505@nmsu.edu
Bernstein, Sharyn – Choral Asst/Web Admin	105	6-2067		sbernstn@nmsu.edu

TECHNICAL STAFF

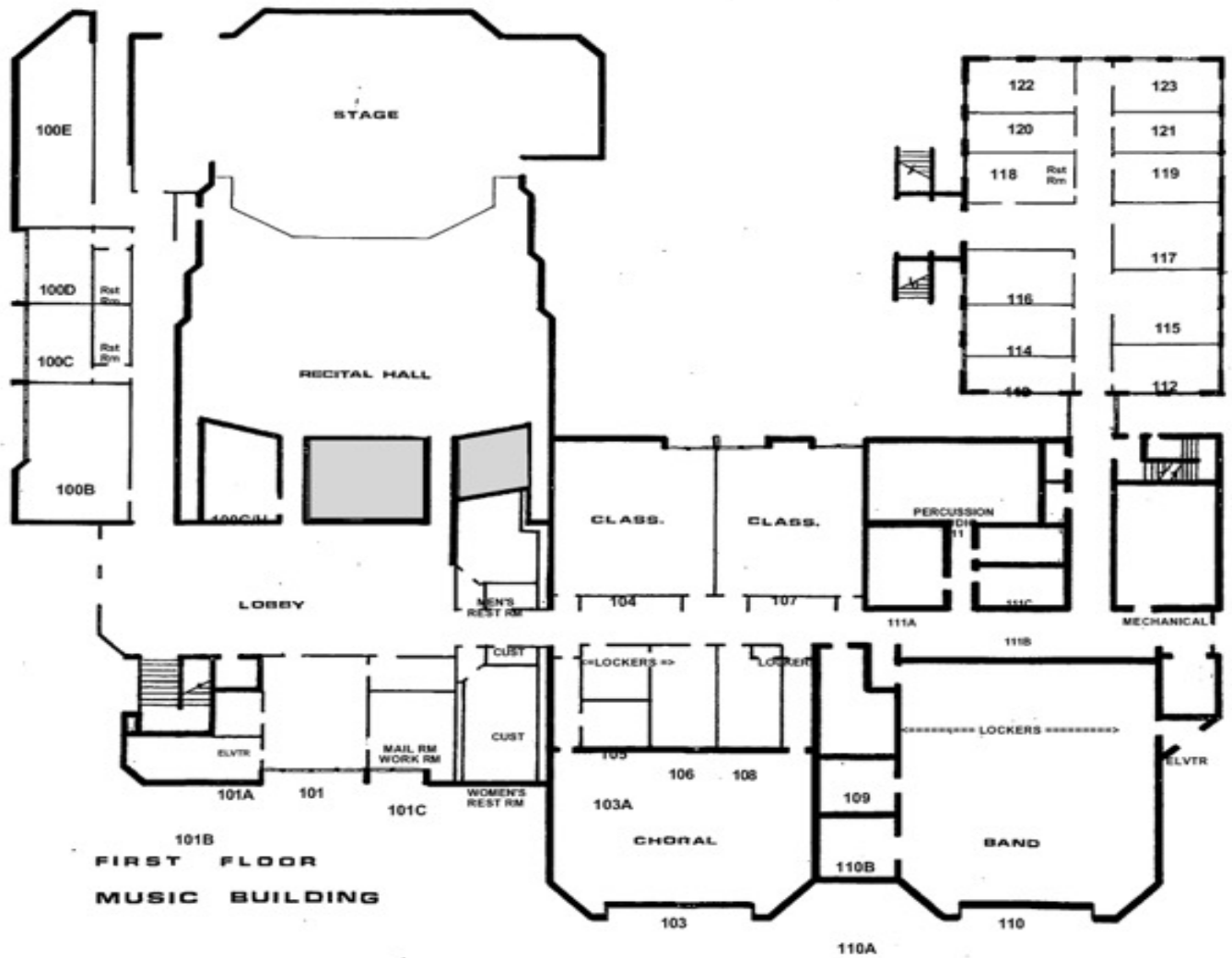
Lee, Jeff – Stage Technical Director	101B	6-4877		jslee@nmsu.edu
--------------------------------------	------	--------	--	----------------

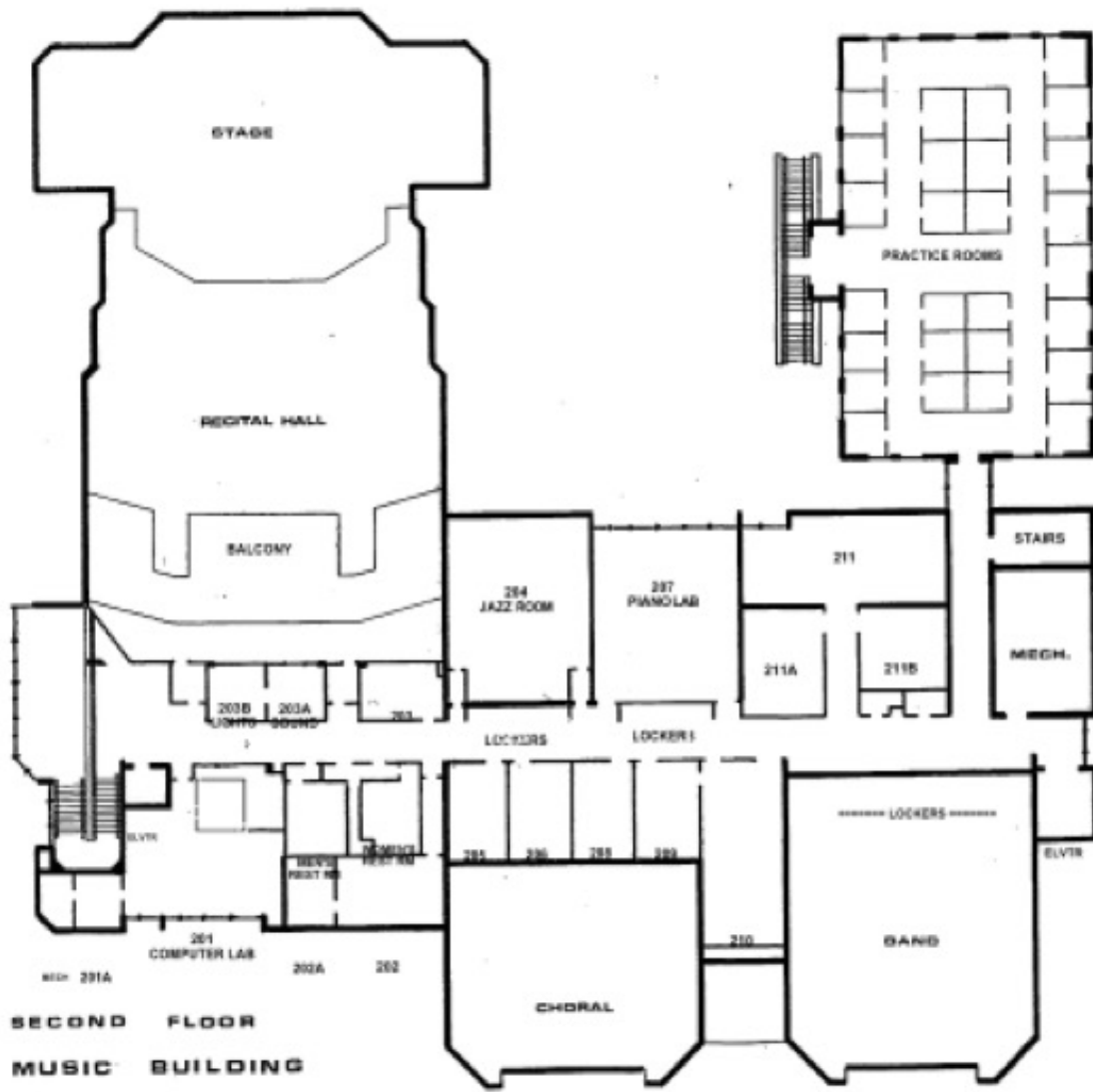
SYMPHONY ADMINISTRATIVE

Rustenbeck, Carmen – Interim Exec Dir	210	6-3374		executivedirector@lascrucessymphony.org
Galindo, Jesse – Ticket/Office Mgr	210	6-3709		programcoordinator@lascrucessymphony.org
Galindo, Jesse - Librarian/Operations	210	6-2966		librarian@lascrucessymphony.org
Anaya, Rachel – Fundraising	210			

OTHER

Band Library	109	6-2296		
Band Office Work-Study Desk	115	6-5923		
Band Office Fax	115	6-2472		
Music Office Work-Study Desk	101	6-4728		
Music Office Fax	101	6-8199		
Media Lab	201	6-3548		
<u>Police/Fire Emergency</u>		911		
<u>Non-emergency</u>		6-3311		
<u>OFS</u>		6-7114 (after hours – 6-2529)		





**SECOND FLOOR
MUSIC BUILDING**